



# PRODUCT GUIDE **2023**

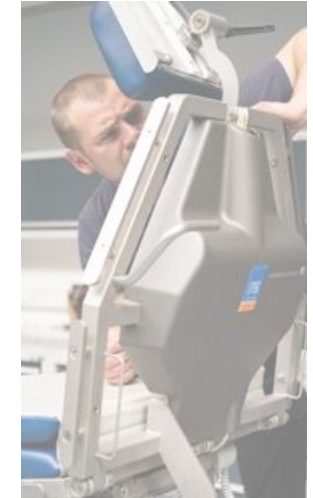


**SURGICAL CHAIRS & TABLES** FOR EYE- & MICROSURGERY

ENJOY QUALITY AND DESIGN

E

# About us



*"We build operating tables and surgical chairs for physicians and patients with a keen understanding of quality and outstanding comfort!"*

*Christian Scherrieble*



*"We develop products for the most brilliant machine there is – the human body."*

*Jürgen Scherrieble*



## We started out with a vision - “Designed from the practice - for the practice”

**UFSK-OSYS** has been developing highly specialized mobile treatment and surgeon’s chairs for ophthalmology for almost 30 years - in close cooperation with renowned ophthalmic surgeons. We believe in never losing sight of what really matters, while keeping a keen eye on the latest advances in medicine. Our core competency: the precise and safe positioning of both patient and surgeon for eye surgeries and microsurgical procedures in the head area. To address this challenge, we build tailor-made work platforms offering the latest in technical and functional sophistication while making your OR management super efficient.

The "Mobile Table Rotation" is our signature workflow concept designed to handle rapid surgery cycles with high patient turnover. This concept has been one of our international bestsellers for years, especially in the field of ophthalmology! Thanks to state-of-the-art materials and sophisticated technical details, our equipment is durable and easy to maneuver at the same time while helping to make your "surgical rotation schedules" efficient and back-friendly.

**UFSK-OSYS** treatment and surgeon’s chairs - "Made in Germany" - are used all over the world and are supported by a network of qualified **UFSK-OSYS** service partners around the globe.

We have good reason to be proud of this market presence, which is the fruit of our long-standing quality policy and customer-focused corporate philosophy. Whether in development, design and product approval or production, sales, logistics and after-sales - we believe in adding our own design contributions to all areas, and we believe in optimizing, communication and confidence building.

We believe that this is the way to create the best and most exciting products - the result of good cooperation and mutual inspiration!

Come and discover our latest ideas!



# Content



About us	2
Facts	6
Corporate philosophy	8
<b>UFSK-OSYS</b> quality	10
Legal notice	107

## Surgeon's chairs

<i>premiumLine</i>	68
<i>surgiForce</i>	70
<i>surgiForce light</i>	74



## Treatment chairs

<i>premiumLine</i>	12
<i>eyeForce</i>	14
<i>eyeForce + e-drive</i>	18



<i>performanceLine</i>	24
<i>500 XLE</i>	26
<i>500 XLE comfort</i>	30



## Assistant's chairs

<i>performanceLine</i>	80	<i>assistTrend</i>	88
<i>surgiTrend</i>	82	<i>assistPro</i>	90
<i>surgiLine</i>	84	<i>easyPro</i>	92
		<i>easyLine</i>	93
		<i>assistLine</i>	94





## Treatment chairs

<i>functionalClass</i>	36
500 XLS	38
500 ECO	44



## Treatment table

400 XL	50
--------	----



## Transport and relaxing chairs

<i>motionLine</i>	54
<i>motionLine-E</i>	56



## Instrument tables

<i>supportLine</i>	60
<i>supportLine plus</i>	61



## Disposables

	62
Cover drapes - <i>stayClean</i>	64
Paper roll - <i>stayClean roll</i>	67



## Classifications/color cards

Classifications	98
Color cards	100



# Facts



Ophthalmic surgery

## Core competence

### Ophthalmology

For almost 30 years, **UFSK-OSYS** has been developing its products in close cooperation with internationally renowned ophthalmic surgeons, true to the motto:

*"Designed from the practice - for the practice"*

exclusive mobile eye surgery and surgeon's chairs. Considering the very high patient turnover in this medical field and the global use of our products, we want to offer our customers a service friendly technology designed to state-of-the-art quality standards.

## Every minute counts



Less and less time for more and more patients? Tight calculations and falling return on investment? Clinic-friendly rotation systems are a big help for cutting down on average surgery times because every minute counts.

**3** *UFSK-OSYS operation chairs per OR on average.*

**30** *cataract surgeries per day.*

## Optimized workflow

While you are operating on a patient, another patient can be prepared while yet another patient can recuperate. Your patient never needs to leave his or her seat. With the simple push of a button, You can conveniently adjust the treatment chair into operating table position - comfort right from the start.

Well over

**15.000** *UFSK-OSYS operating systems worldwide.*

**4.000** *UFSK-OSYS equipped operating rooms.*

## Further medical specialties



I.V.I. treatment



Neurosurgery  
Microsurgery



Implantology  
Oral surgery  
Maxillofacial surgery



Aesthetic surgery  
Plastic surgery  
Hair transplantation



Dermatology



ENT surgery

Well over **7.000.000** *operating cycles on UFSK-OSYS operating systems per year.*

## Surgery according to the principle of rotation

Thanks to the mobility of **UFSK-OSYS** treatment chairs, patients can be pushed directly from the preparation room into the operating room - without having to get up. After surgery, patients can be taken to the recovery room on the same chair. This quickly frees up your operating theater for the next patient. What better guarantee for a high patient turnover - while saving you time and money!

### 1 Simple and Secure Access

*The low access and sitting height support even physically handicapped patients while getting into the chair.*



### 2 Innovative Patient Transport

*The "intelligent" chassis ensures effortless patient transport even through narrow passages and on longer routes.*



### 3 Preoperative Preparation

*Headrest, backrest, seat surface and footrest are infinitely adjustable via electric motors - at the touch of a button - allowing you to immediately create the perfect surgery conditions for surgeon and patient alike - without losing unnecessary time.*



**PREPARE, OPERATE,  
RECOVER ON  
ONE CHAIR**

MOBILE TABLE ROTATION

### 6 Comfortable and Convenient Exit

*The chair automatically adjusts to the exit position allowing patients to depart easily and safely.*



### 5 Enhanced Postoperative Relaxation

*From the operating room directly to the wake up phase, allow your patients to start recuperating right away in an anatomically correct relaxation position which is initiated at the touch of a button - without need of first shifting or relocating the patient.*



### 4 The perfect Surgical Position

*Utilizing the chair's memory function, a surgeon can retrieve his or her ideal patient position at the push of a button. Total ergonomic design ensures outstanding comfort - before, during and after a procedure.*





# Corporate philosophy



## Innovations

### Intelligent solutions for your workplace

In constant search for perfection, we specify innovative details in our designs and functionality of our products. For even more

- Mobility
- Ease of use
- Comfort in seating and reclining
- Corporate healthcare



## Know-how and precision

## Intelligent design that promotes mobility

### Our highlights



#### Battery technology

usage, independent from electricity supply - powerful and eco friendly



#### e-drive

The electronic pushing aid, easy patient transfer - without much effort!



#### Memory-position and Auto-Run-function

for frequently used treatment positions - time saving and useful



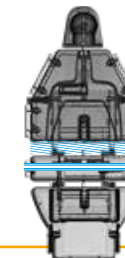
#### Sterile Controlling

made easy - with pop-up operation, joystick or foot pedal rocker switch



#### Steering-Guide function

easy steering - without great effort!



#### "SES" Surface-Extensions-System

For sliding the patient safely and comfortably into new positions

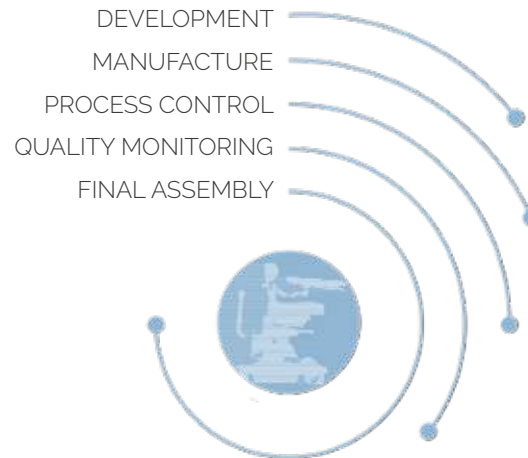
## UFSK-OSYS Practical Intelligence

### Design and production

Developing and manufacturing treatment and surgeon's chairs of sophisticated and sustainable product quality has been our top priority for years. We believe in your ideas and suggestions as an excellent opportunity for continuously improving our products - to give you the best possible equipment to work with.

We design and build our products in small series for maximum quality monitoring and process control. Every single piece of equipment undergoes 100% check-out!

**UFSK-OSYS** manufactures more than "tables and chairs". World-class medical and technical equipment. In **premiumLine**, **performanceLine** and **functionalClass** Quality.



## Investment

### Investing with foresight into the future

In 2020, we expanded our production facilities and capacities at the Regensburg site for the third time, thus creating the spatial and personnel resources for the sustained positive further development of our company. For even more efficiency and performance!



## Preventive technology

### Reduced illness rate and improved productivity

We developed both our treatment chairs and tables and our surgeon's chairs and assistant chairs based on empirical studies - especially for eye and micro surgery. When designing and engineering our products, we paid special attention to the physical strains caused by poor posture in daily work life. Our products make it so easy to prevent back and neck problems, intervertebral disc problems, or fatigue symptoms.

- High-precision armrest systems with featherweight guidance for personalized positioning
- **e-drive** system
- Steering Guide
- Adequate seat inclination
- Lumbar support
- Lightweight chassis



## Patient-oriented perfection in every detail

# UFSK-OSYS quality



## Quality monitoring

We define "quality" not only by the end product but in all processes, and we are dedicated to continuous improvement. We believe in supreme quality - both in our products and in our services - and we dare you to put us to the test! Our certified QM system meets the requirements of ISO 13485:2016, i.e. it meets the particular performance and safety criteria imposed for the development, manufacture and sale of medical devices.

Beyond complying with the technical product standards (DIN/EN/IEC) and legal conformity requirements (CE, FDA, etc.), we are living these quality standards. Both "before" and "after" a customer's purchase, **UFSK-OSYS's** staff makes sure of giving the best possible support: best-possible choice of products, regulatory support, shipping, and after-sales service.



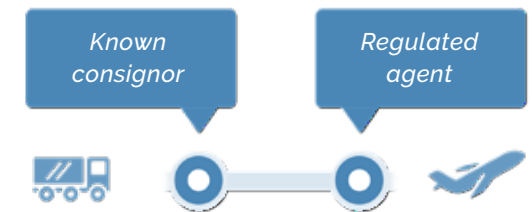
## Modern logistics and International sales

### Worldwide shipments - fast and reliable

Every year, we dispatch about 1,000 bulk deliveries and 2,000 packages - including urgently needed spare parts, medical accessories - as well as demo, replacement and rental equipment!

One of our guiding principles says that deliveries of goods and services in the medical sector cannot be delayed! Our contribution: well assorted and monitored spare parts management, fast response times plus air freight status as "known consignor". As part of the secure supply chain, our shipments are made in compliance with special security precautions and standards.

Urgent deliveries benefit from simplified and accelerated air freight handling processes - from dispatch to loading onto the aircraft - a time edge you will enjoy every time when ordering our medical equipment.





## UFSK-OSYS Business Intelligence

### Communication as added value

We believe in long-term, fair and successful cooperation with our customers as our number-one priority governing all of our actions.

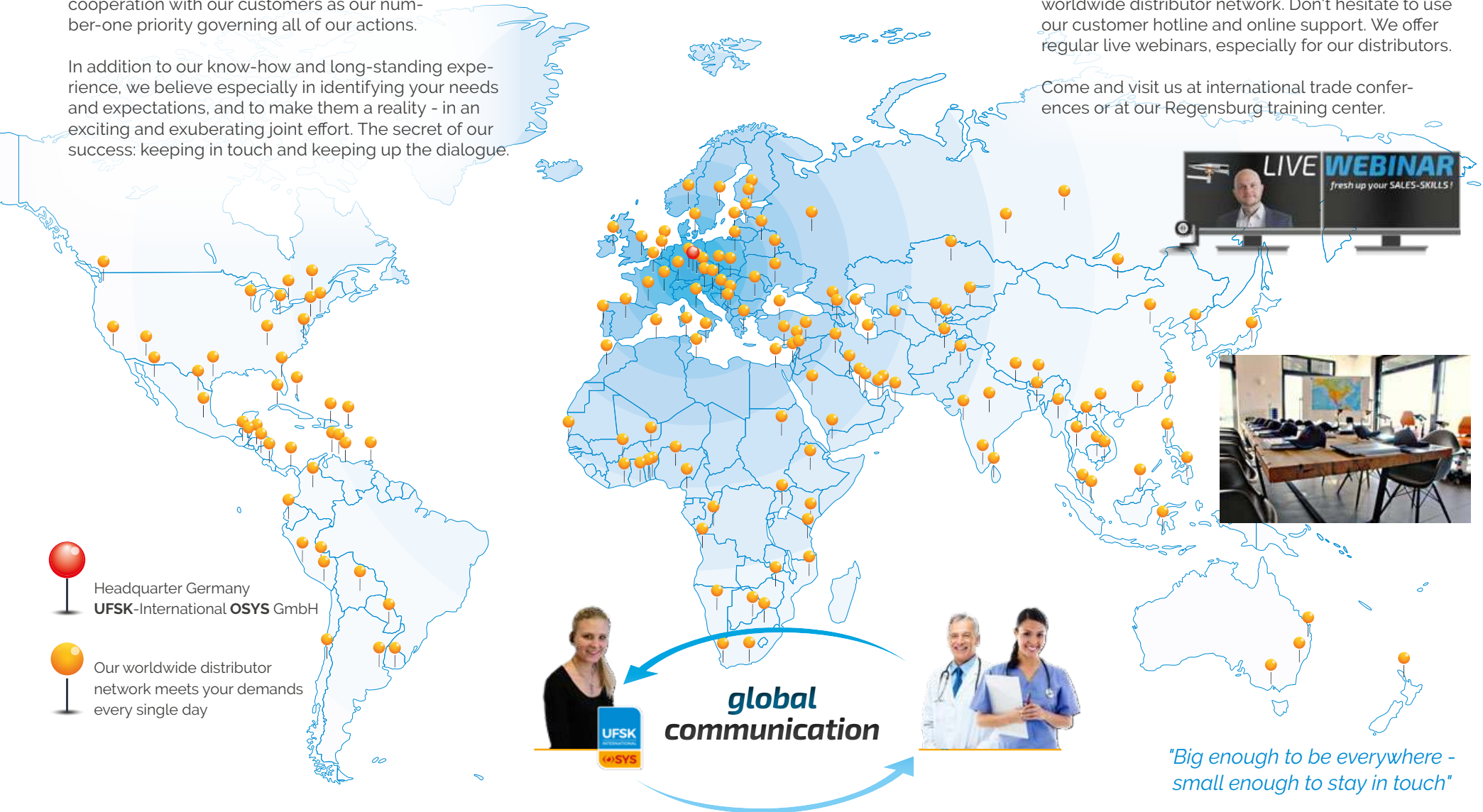
In addition to our know-how and long-standing experience, we believe especially in identifying your needs and expectations, and to make them a reality - in an exciting and exuberating joint effort. The secret of our success: keeping in touch and keeping up the dialogue.

## UFSK-OSYS After-Sale

### Service

We are connected to our customers 24/7 via our worldwide distributor network. Don't hesitate to use our customer hotline and online support. We offer regular live webinars, especially for our distributors.

Come and visit us at international trade conferences or at our Regensburg training center.



-  Headquarter Germany  
**UFSK-International OSYS GmbH**
-  Our worldwide distributor network meets your demands every single day



*"Big enough to be everywhere - small enough to stay in touch"*

# premiumLine



## Our top model

As the fruit of our decades of experience in the field of ophthalmic and microsurgery, we have managed to design the absolute high-end, top quality model. Allow yourself to be swept away by the innovative materials, the visionary shapes, the elegant design and the sophisticated extra functions.

### Set new standards in your operating room!

Come and discover the *eyeForce*, and be dazzled by its economy, effectiveness and quality. It is synonymous for top quality. Optionally equipped with our *e-drive* system, it is the only treatment chair in ophthalmic surgery business that comes with an automatic easy-push aid. It is the *e-drive* that moves, not the human!

### Demand the best!



The "Preventive Technology" award reflects uncompromising lightweight construction, outstanding ergonomic operability, comfortable patient positioning and space-saving design. Back diseases of your operating theater staff are now a thing of the past.

This is our contribution to effective health and safety in the workplace.

**High end quality for  
ophthalmic surgery**

## eyeForce

Item No.: 1800 0000



# eyeForce + e-drive

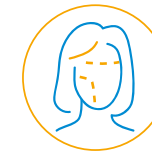
Item No.: 1800 0000 + 3316 0000



Ophthalmic surgery



Dermatology



Aesthetic surgery  
Plastic surgery  
Hair transplantation



Implantology  
Oral surgery  
Maxillofacial surgery



The professional world is excited and has honored us with an award!

Our *premiumLine eyeForce* treatment chair was awarded the **i-NOVO® Awards Tech Winner** Innovation Prize - in recognition of the rational design and extremely high-quality workmanship. We feel honored by this recognition and award.



# eyeForce

Item No.: 1800 0000

Our most innovative and modern patient positioning system with auto-run functions - specialized for precision surgery in head area. With optional *e-drive* easy-push aid, Steering Guide and SES automated extension system - for even more ergonomics and economy at your workplace.

**Trendsetting comfort  
and supreme quality**



## MED.TEC at its highest level

### Double castors

Four fully rotating double-run castors for back-friendly and easy rolling motion.



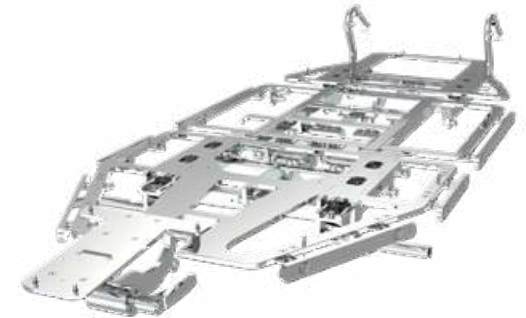
### Chassis

Precision lightweight chassis made of cast aluminum.



### Frame

Laser-cut procedure. Highly stable stainless steel frames. Including standard rails 25 x 10 mm for the attachment of a wide range of components.



## Precise positioning of the head part

### Headrest

3D and longitudinally adjustable headrest element with head molding and neck support for guaranteed safe and correct positioning of the head.



## Components

### Headrest with ball joint and more

Discover additional features and extensive components on page 22-23.

Item No.: 3351 1020



## Sterile adjustment by surgeon/maximum legroom



### Tiltable foot control

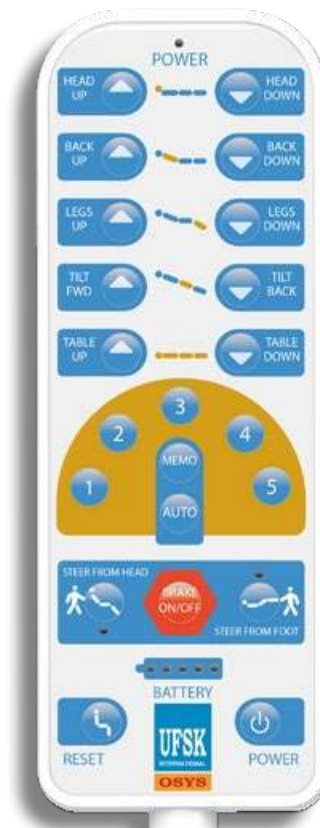
Tiltable foot keypad via two 4-way joysticks plus activation switch allow sensitive and precise chair adjustment even after the surgeon is already steril. Pushing the pedal lip (by foot) will activate the electronic control and battery mode of the equipment.



# Positioning

The **eyeForce** treatment chair is adapted for patient positioning and ergonomic and comfortable patient treatment, in particular for outpatient surgical techniques, and offers versatile adjustment of the head, back, seat and leg sections and overall chair height for patient transport.

- Five freely configurable memory positions
- Reset button
- Auto run function
- Battery charge indicator



## Hand control

### Activate memory function/automatic movement

It is possible to save 5 MEMO positions: Set the desired position (hold down the MEMO key until the orange LED lights up). Then press the numeric key of a memory location for a MEMO position - the MEMO position is now saved.



Press and hold "AUTO" until the LED lights orange, then briefly tap on either 1, 2, 3, 4 or 5 to move to the desired position of the surgical bed.



All castors are braked (red)



## Positioning by hand control

### Standard recommended memo keys





## “Steering Guide” maneuvering aid



### Operation via push handles and hand control

The **eyeForce** treatment chair offers an electronically controlled braking system with “Steering Guide” function. In addition to “free movement” and “brake applied” the treatment chair offers directional guidance as an additional electronic wheel positioning function. This additional function facilitates the controlled maneuvering of the chair by just one person and can be activated from both sides of the chair via the chair handles or optionally via the hand control.

Directional guidance is activated (orange)



Directional guidance is deactivated (green)



### Pushing from the head direction



### Pushing from the foot direction



## Surface-Extensions-System “SES” positioning aid

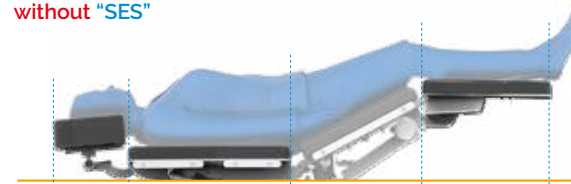


### Automated solution for patient positioning

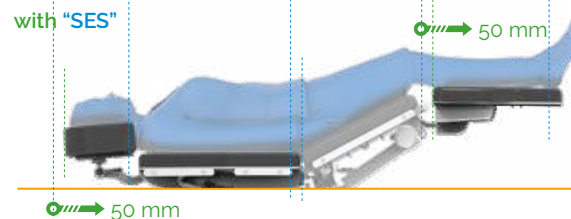
Both the backrest and the legrest segments automatically move 50 mm along with the patient when moving the chair into the reclined or entry position. The “SES” avoids patient repositioning, which would otherwise be necessary, by extending and flexing the individual segments. Returning the leg segment to the entry position reduces the entry height by an additional 50 mm.

### Movement in reclining position

without “SES”



with “SES”

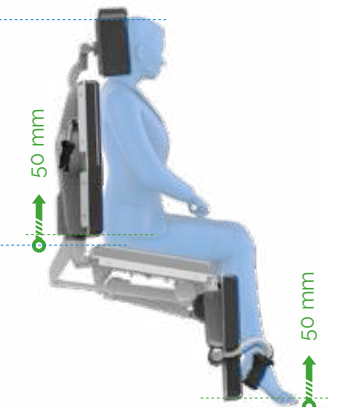


### Movement in entry position

without “SES”



with “SES”



### Retractable push handles

Manually adjustable push handles on the foot end with automatic return function, for easy patient transfer.



# eyeForce + e-drive

Item No.: 1800 0000 + 3316 0000

Powerful yet gentle.

*e-drive* system for effortless and rapid movement of the chair over long distances. The new optional system consists of a 5th wheel with drive motor. It serves as a pushing aid for easy forward and backward movement – with an extra range of 2 kilometers per battery charge. The system's operation is identical to that of the "Steering Guide" system, via the respective push handles with potentiometer for infinite and precise speed adjustment. It is possible to integrate the system any time at a later date.



**WE-DRIVE YOUR OR!**

## The electronic push-aid

### Control over push handles

Push handle at the left head/foot end with a rocker switch for moving the treatment chair forward and back.



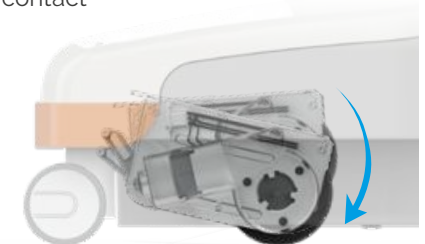
Push handle at the right head/foot end with a potentiometer for speed control.



Low-noise movement/trackless movement

By switching on the fifth electronically drive wheel in the chassis of the chair, the physical labor of the **person doing** the pushing is noticeably reduced.

- Shock-free transport
- Long-lived design
- Optimum floor contact
- Long range



## The ease of pushing - How much force is needed to move 300 kg? - Zero.

### Who would have thought this is possible?

This is how far your staff pushes a load of 300 kilograms per year:

- approximately 70 meters per surgery round
- up to 10,000 surgeries per year each

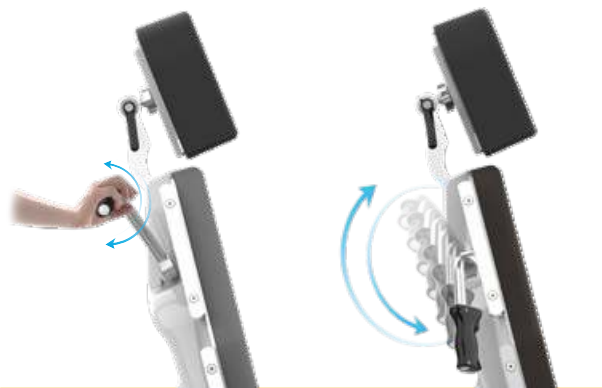
This results in up to **700 km per year!**



More than 1,000 **eyeForce** with **e-drive** are already in use in eye clinics all over the world: up to **700,000 kilometers per year!**



## Push handles 2.0 - perfect interaction - top-of-the line mobility and ergonomics.



More legroom in the operating theater! Space-saving. Fold-down handles on the head end.



Solid, ergonomically shaped handles at optimized pushing height.



# Technical specifications



## Chassis

- Outside length 900 mm
- Outside width 662 mm
- Brake system acting on all four castors
- Directionally guided steering ("Steering Guide"), easily activated at the push of a button
- Castor diameter, electr. conductive  $\varnothing$  150/100 mm
- Foot control element with joystick (total, head, back, Trendelenburg up/down)
- Emergency stop button
- Optional push-aid (**e-drive**)
- With equipotential bonding connection
- Abrasion-resistant corner guards (orange) made of synthetic rubber

## Trendelenburg/Reverse Trendelenburg



## Upper frame

- 4-part support frame (head, back, seat, leg part)
- Removable upholstery 40 mm
- Width of upholstery 650 mm
- Standard stainless steel side rails on both sides 25 x 10 mm
- Width incl. norm rails 700 mm
- Length 1,780 – 1,900 mm

	Angle	Dimensions (L x W)
• Head part	-31°/+22°	255 x 245 mm
• Back part	0°/+75°	540 x 650 mm
• Seat part	-6°/+26°	450 x 650 mm
• Leg part	0°/-78°	510 x 610 mm
• Height adjustment		640 – 900 mm
• Entry height		580 mm
• Legroom		470 – 730 mm
• Trendelenburg -26°/Reverse Trendelenburg +6°		

## Back part/leg part



## Electrical control

### Manual keypad

- Memory controller with 10 buttons for head, back, seat, leg part – total up/down; 2 buttons for directionally guided steering, 1 button for electronic brake, 1 easy entry button, memory button, on-off button, auto-run function
- 5 freely programmable memory positions
- Visual battery level indicator

### Foot control element

- Foot control element 2 joysticks plus activation switch
- Optional push-aid (**e-drive**)

### Electric drives

- Head, back, seat, leg part, total up/down
- Trendelenburg/Reverse Trendelenburg

## Height adjustment





## Powerful accumulators

- Power supply-independent battery unit with 2 batteries (lead-gel), pollution free, maintenance-free, cadmium-free
  - Quick-exchange battery drawer replaceable without tools
  - Universal battery charger
- Input: 100 – 240 V  
Output: 24 V

### Operating time per battery charge

- Measured by operating circle (Prepare-Operate-Recover) 100 OPs
- Quantity of operating circles depends on individual operation

Max. load 250 kg

Weight 163 kg

Subject to technical modifications.

## Mains-free operation

Easy recharging of the equipment thanks to charging adapter and integrated battery charger circuit board.



## Simple battery replacement

An additional quick-exchange drawer (including batteries) allows you to quickly replace the rechargeable battery packs (back-up system **Item No.:** 3339 0000).



## Equipment protection

### Cover drape *stayClean*

2,000 x 730 mm, box à 160 Pieces  
4x 40 Pieces **Item No.:** 3034 0014

Page 64



## Color card

Standard color anthracite **Item No.:** 3037 0052

“Tundra skai”  
Page 102

“Pandoria Plus”  
Page 103



# Components



**eyeForce**

Item No.: 1800 0000



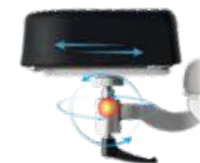
*e-drive*,  
upcharge

Item No.: 3316 0000



Backup battery drawer  
incl. batteries

Item No.: 3339 0000



Headrest with ball joint,  
360° all-round adjustment,  
factory-fitted

Item No.: 3351 1020



Side parts right and left,  
580x200 mm,  
incl. quick-release clamp for  
mounting on norm rail

Item No.: 3351 0050



Side rails right and left,  
swiveling incl. locking,  
upholstered

Item No.: 3102 0000



Anesthesia arm board  
with universal joint,  
incl. mounting clamp

Item No.: 3011 0000



Mounting clamp polished  
aluminium, with quick clamp  
lever for norm rail 25x10 mm,  
incl. locking device

Item No.: 3090 0000



Flexible surgical drape  
support rod (mounting clamp  
3090 0000 not included)

Item No.: 3032 0000



Flexible surgical drape  
support rod, with air  
connection (mounting clamp  
3090 0000 not included)

Item No.: 3033 0000



Hand control holder,  
PVC  
(mounting clamp 3090 0000  
not included)

Item No.: 3018 0009



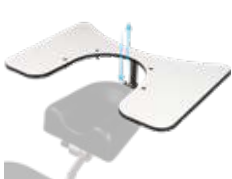
Hand control holder for  
attachment onto an I.V. Pole  
Ø 25 / 18 mm, PVC

Item No.: 3027 0006



Head part bumper  
stainless steel

Item No.: 3028 0000



Wrist rest  
550x370 mm,  
height adjustable,  
incl. mounting plate,  
adjustment 115 mm

Item No.: 3209 0000



Wrist rest, adjustable,  
incl. mounting plate  
3013 0000,  
adjustment 115 mm

Item No.: 3014 0000



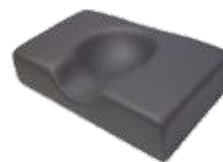
Wrist rest, adjustable, tiltable,  
incl. mounting plate  
3013 0000,  
adjustment 115 mm

Item No.: 3014 0005



Mounting plate stainless steel,  
for wrist rest 3014 0000,  
3014 0005 and 3209 0000

Item No.: 3013 0000



Head fixation pillow with  
hollow (rubins pillow),  
410x250 mm, height 100 mm,  
factory-fitted

Item No.: 3022 0000



Shoulder parts,  
right and left

Item No.: 3043 0000



Instrument table  
500x300x15 mm,  
height adjustable, swiveling,  
detachable,  
incl. component arm

Item No.: 3065 0003



Component arm  
stainless steel, swiveling,  
incl. extendible I.V. Pole  
Ø 25 mm

Item No.: 3024 0000



Component arm  
stainless steel, not swiveling,  
incl. extendible I.V. Pole  
Ø 25 mm

Item No.: 3334 0000



Wrist secure straps,  
pair

Item No.: 3015 0000



Body strap with Velcro straps,  
2-piece

Item No.: 3083 0000



Foot protection foil

Item No.: 3328 0000



Foot part extension,  
attachable, incl. norm rail

Item No.: 3351 0002



Step

Item No.: 3351 0042



Knee half roll,  
600x280x140 mm,  
PUD-coated

Item No.: 3019 0000



Knee roll round,  
500x150 mm,  
PUD-coated

Item No.: 3050 0000



Upholstery incl. integrated  
knee roll,  
factory-fitted

Item No.: 3037 0266



Cylinder holder

Item No.: 3072 0001



Instrument table  
*supportLine*  
height adjustable  
730 – 985 mm

Item No.: 3351 0026



Instrument table  
*supportLine plus*  
height adjustable  
930 – 1.185 mm

Item No.: 3351 0045



Cover drape for  
treatment chair,  
*stayClean*  
2.000x730 mm,  
box à 160 pieces

Item No.: 3034 0014

# performanceLine

## Our classic

It represents proven and time-tested technology in a modern design, it is deliberately low-tech, and it offers an extremely attractive price-performance ratio.

Its chief benefits include space-saving design and outstanding maneuverability coupled with a lean range of easy-to-manage functions.

Do you want flexible use in confined spaces with power-supply independent battery operation?

Then you should go for our classic: The **500 XLE** or **500 XLE comfort**, for optimal combination with our **surgiLine** and **surgiTrend** surgeon's chairs.

**performanceLine** systems are designed for user satisfaction

Designed for continuous use in serially equipped operating rooms with high patient turnover, the **performanceLine** satisfies every user thanks to its easy handling before, during and after the surgery.



An award-winning "Preventive Technology", the **performanceLine** works hard to protect your surgical staff from back problems, thanks to its lightweight construction and easy maneuverability.

**Less is more -  
more benefits**

## 500 XLE comfort

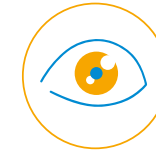
Item No.: 1500 0006  
+ 3037 0080





# 500 XLE

Item No.: 1500 0006



Ophthalmic surgery



Implantology  
Oral surgery  
Maxillofacial surgery



ENT surgery

# 500 XLE

Item No.: 1500 0006

The perfect reclining treatment chair for rotation systems in outpatient operating rooms.

**Powerful  
and agile**



## MED.TEC at its highest level

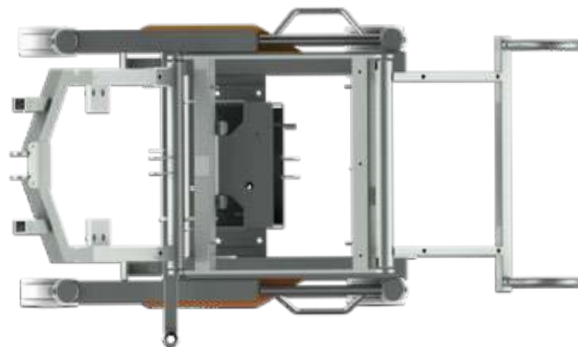
### Double castors

Four fully rotating double-run castors for back-friendly, easy rolling motion.



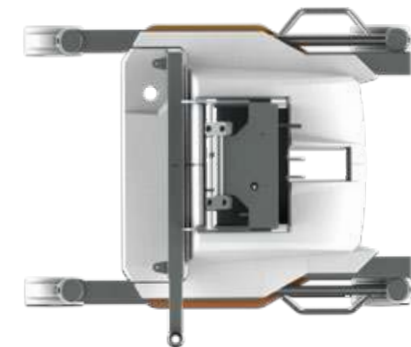
### Chassis/frame

Precision steel frame chassis, zinc primed with anthracite textured paint coating.



### Chassis cover/upholstery

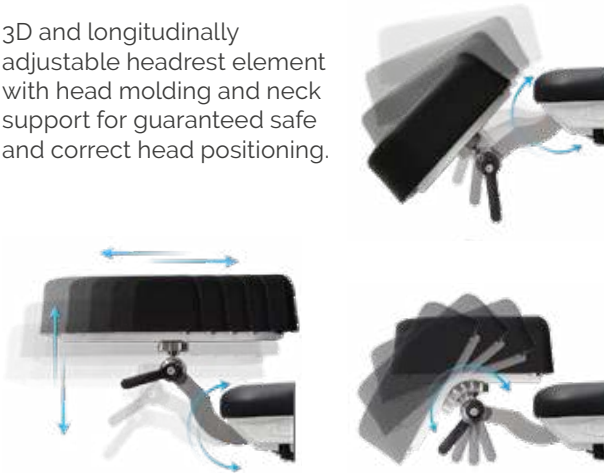
The mirror-finish plastic cover panels with their scratch-resistant and impact-modified surface finish are extremely hygienic and easy to disinfect.



## Precise positioning of the head part

### Headrest

3D and longitudinally adjustable headrest element with head molding and neck support for guaranteed safe and correct head positioning.



## Components

### Headrest with ball joint and more

Discover additional features and extensive components on page 34-35.

Item No.: 3351 1021



## Sterile adjustment by surgeon/maximum legroom



### Flexible reaction by foot control

Removable foot keypad for infinite electronic height and head adjustment including reactivation button from the stand-by mode.

# Positioning

The 500 **XLE** treatment chair is designed for ergonomic and comfortable patient positioning and treatment, particularly for outpatient surgical techniques. It offers versatile adjustment of the head, back, seat and leg sections and overall chair height for patient transport.

- Eight freely programmable memory positions
- CPR button
- Reset button
- Auto run function
- Battery charge indicator



## Hand control

### Multi-functional manual keypad

Battery charge indicator

Reset button

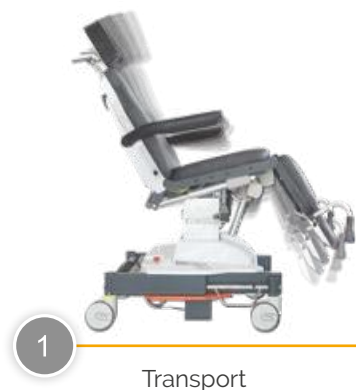
CPR button

AUTO run function

8 free configurable memory positions

## Positioning by hand control

### Standard recommended memo keys



For additional desired Memo positions, the system features 3 additional numeric keys.



## Mechanical maneuvering aid on the chassis



### Operation via foot lever on the chassis

Activation of directional guidance

Pushing from the head direction



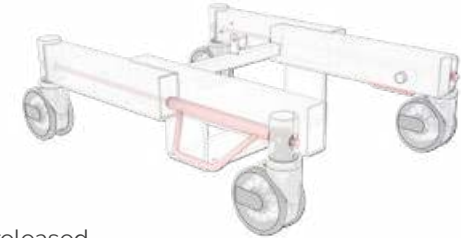
Pushing from the foot direction



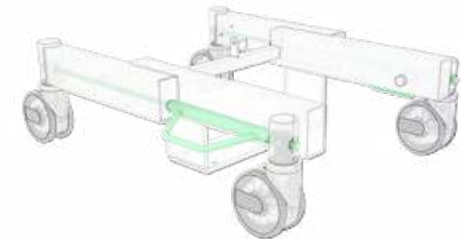
## Braking system

### Manually adjustable foot lever

Castors are braked



Castors are released, directional guidance is deactivated



## Push handles

Detachable push handles on the foot ends for easy maneuvering.



## Armrests

Hinged and removeable armrests for easy entry and exit as well as transfer of the patient.



## Components

### Additional handles/shoulder parts and more

Discover additional features and extensive components on page 34-35.



# 500 XLE comfort

Item No.: 1500 0006  
+ 3037 0080

Our 500 XLE with extra thick upholstery, integrated knee support cushion and flattened neck area - for extra reclining comfort.

**Outstanding comfort,  
particular flexibility.**



## Upholstery

### Comfort

Thick comfort upholstery and integrated knee support cushion, individually positionable to suit every patient's body height. The treatment chair featuring comfort upholstery is particularly well suited for longer surgical procedures (e.g. retina surgery).



Available in a wide variety of colors. Please refer to page 100 for our complete range of colors.



## Flexibility in every detail

### Headrest

The flattened back cushion of the Comfort upholstery in the neck area offers maximum freedom of movement for the headrest.



### Integrated knee support cushion

Optimum patient comfort thanks to the integrated knee support cushion which can be easily adjusted to accommodate any patient height.



An optional legrest extension can be attached when treating tall or very tall patients.



## Components

### Foot part extension

Adjustable foot part extension incl. foot support for easier entry and exit of the patient.



Besides, entry height is reduced by 80 mm.

Item No.: 3351 1028



190 mm

# Technical specifications



## Chassis

- Frame profile 90 x 50 mm
- Outside length 785 mm
- Outside width incl. lever 720 mm
- Steel tube frame, powder-coated elegant anthracite matte finish
- Brake operable from both sides and acting on two castors each; two castors featuring independent directional steering function
- Double rimmed castors  $\varnothing$  125 mm
- Detachable foot keypad (total, head up/down)
- Emergency stop button
- Visible screws are made of stainless steel
- With equipotential bonding connection

## Trendelenburg/Reverse Trendelenburg/CPR



## Upper frame

- 4-part support frame (head, back, seat, leg part)
  - Removeable upholstery
  - Width of upholstery 610 mm
  - Width incl. armrests 850 mm
  - Length 1.760 – 1.900 mm  
(incl. legrest extension) + 190 mm
- |                     | Angle                      | Dimensions (L x W)                                                                                      |
|---------------------|----------------------------|---------------------------------------------------------------------------------------------------------|
| • Head part         | -29°/+35°                  | 255 x 245 mm                                                                                            |
| • Back part         | 0°/+83°                    | 610 x 610 mm                                                                                            |
| • Seat part         | -5°/+35°                   | 450 x 610 mm                                                                                            |
| • Leg part          | 0°/-77°                    | 510 x 610 mm                                                                                            |
| • Height adjustment |                            | 625 – 925 mm<br>(comfort) 655 – 955 mm                                                                  |
| • Armrests          | 0°/+180°                   | (2x) 470 x 75 mm                                                                                        |
| • Entry height      |                            | (standard) 580 mm/500 mm (incl. legrest extension)<br>(comfort) 610 mm/530 mm (incl. legrest extension) |
| • Legroom           |                            | 520 – 820 mm                                                                                            |
| • Trendelenburg     | -12°/Reverse Trendelenburg | +5°                                                                                                     |

## Back part/leg part



## Electrical control

- All components according to IP54
- Hand control with 8 individually programmable memory positions, auto run function, reset button
- Foot keypad with 4 foot switches and reactivation button

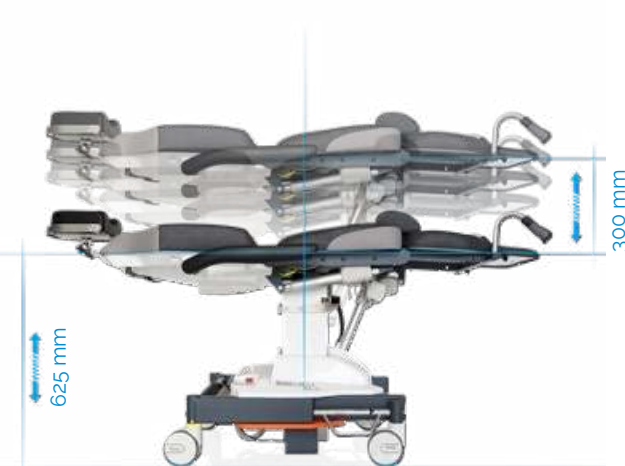
### Electric Drives

- Head, back, seat, leg part, total up/down
- Trendelenburg/Reverse Trendelenburg

## Lifting column

- Max. lifting 300 mm
- Max. load 250 kg
- Motors IP54 with HAL sensors, to be memorized

## Height adjustment





## Powerful accumulators

- Battery box with 2 batteries (lead-gel), pollution free, maintenance-free, cadmium-free 2 x 12 V, 7,2 Ah
- As back-up-system exchangeable without tools
- Acoustic low voltage signal for discharge protection
- Universal battery charger Input: 100 – 240 V Output: 30 V

### Operating time per battery charge

- Measured by operating circle (Prepare-Operate-Recover) 100 OPs
- Quantity of operating circles depends on individual operation

## Further technical details

- Chair has detachable, swiveling armrests made completely with PUR foam
- Detachable seat for service friendly access to electric components

Max. load 250 kg

Weight 135 kg

Subject to technical modifications.

## Mains-free operation

Easy recharging of the equipment thanks to charging adapter and integrated battery charger circuit board.



## Simple battery replacement

Additional safety due to replaceable battery box (back-up system **Item No.:** 3047 0000). Discharged battery box can be replaced quickly.



## Equipment protection

### Cover drape *stayClean*

2,000 x 730 mm, box á 160 Pieces  
4 x 40 Pieces

**Item No.:** 3034 0014

Page 64



## Color card

**Standard color**  
500 **XL**

anthracite **Item No.:** 3037 0052

500 **XLE comfort**

anthracite (main color)  
+ chrome (accent color)  
**Item No.:** 3037 0092

“Tundra skai”  
Page 102

“Pandoria Plus”  
Page 103



# Components



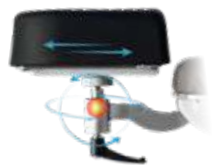
PERFORMANCE  
LINE



**500 XLE**  
Item No.: 1500 0006



**500 XLE comfort**  
Comfort upholstery incl. integrated knee roll, upcharge  
Item No.: 1500 0006 + 3037 0080



Headrest with ball joint, 360° all-round adjustment, factory-fitted

Item No.: 3351 1021



Side parts right and left, swiveling incl. locking, upholstered, 580x200 mm

Item No.: 3351 0012



Norm rail seat part

Item No.: 3351 0047



Side parts right and left, 580x200 mm, incl. quick-release clamp for mounting on norm rail (norm rail 3351 0047 not included)

Item No.: 3351 0050



Backup battery

Item No.: 3047 0000



Pushing handles back part, pair

Item No.: 3351 0046



Pushing handles back part, pair

Item No.: 3351 0017



Anesthesia arm board with universal joint, with arm secure straps

Item No.: 3351 0011



Flexible surgical drape support rod

Item No.: 3205 0000



Flexible surgical drape support rod with air connection

Item No.: 3206 0000



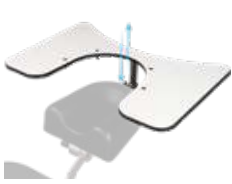
Hand control holder for attachment onto an I.V. Pole Ø 25/18 mm, PVC

Item No.: 3351 1022



Hand control holder, PVC (component holder 3351 0037 not included)

Item No.: 3351 1023



Wrist rest  
550x370 mm,  
height adjustable,  
incl. mounting plate,  
adjustment 115 mm

Item No.: 3209 0000



Head part bumper  
stainless steel

Item No.: 3028 0000



Wrist rest, adjustable,  
incl. mounting plate  
3013 0000,  
adjustment 115 mm

Item No.: 3014 0000



Wrist rest, adjustable, tiltable,  
incl. mounting plate  
3013 0000,  
adjustment 115 mm

Item No.: 3014 0005



Mounting plate stainless steel,  
for wrist rest 3014 0000,  
3014 0005 and 3209 0000

Item No.: 3013 0000



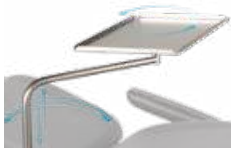
Head fixation pillow with  
hollow (rubins pillow),  
410x250 mm, height 100 mm,  
factory-fitted

Item No.: 3022 0000



Facial pillow,  
horseshoe-shaped,  
incl. adapter plate,  
factory-fitted

Item No.: 3351 1016



Instrument table  
500x300x15 mm, height  
adjustable, swiveling,  
detachable, incl. adapter  
(component holder  
3351 0037 not included)

Item No.: 3065 0000



Shoulder parts  
right and left  
**500 XLE**  
Item No.: 3071 0000

**500 XLE comfort**  
Item No.: 3071 0001



Knee half roll,  
600x280x140 mm,  
PUD-coated

Item No.: 3019 0000



Knee roll round,  
500x150 mm,  
PUD-coated

Item No.: 3050 0000



Wrist secure straps,  
pair

Item No.: 3015 0000



Body strap with Velcro straps,  
2-piece

Item No.: 3083 0000



Foot part extension  
incl. foot support,  
factory-fitted,  
upcharge

Item No.: 3351 1028



Foot protection foil

Item No.: 3092 0001



IV. Pole stainless steel  
Ø 25/18 mm,  
one-hand height adjustable  
1.070–1.660 mm, 4 hooks,  
max. 2 kg/hook, glass and  
holder (component holder  
3351 0037 not included)

Item No.: 3068 0000



Component arm stainless  
steel, swiveling,  
incl. extendible IV. Pole  
Ø 25 mm

Item No.: 3024 0014



Component holder,  
stainless steel

Item No.: 3351 0037



Cylinder holder

Item No.: 3072 0002



Instrument table  
**supportLine**  
height adjustable 730–985 mm  
Item No.: 3351 0026

**supportLine plus**  
height adjustable 930–1.185 mm  
Item No.: 3351 0045



Cover drape for  
treatment chair,  
**stayClean**  
2.000x730 mm,  
box à 160 pieces

Item No.: 3034 0014

# functionalClass



## What procedures will you perform?

Excellent functionality at minimum cost for successful outcomes in the operating room. Mobile options for use in any size facility. Keep patient care number one on your priority list.

### 500 XLS - essential tool in oral and maxillofacial surgery

It has never been so simple to adapt new technology in your daily workflow.

- Multifunctional horseshoe shaped headrest element featuring two-dimensional and longitudinal adjustment
- Power supply-independent battery box with integrated emergency stop button

### 500 ECO - ideal for I.V.I. treatments

Basic budget friendly treatment chair for walk-in OR concepts and Intravitreal Injection (I.V.I.) treatments.

- JUST WALK-IN OR: in 5-6 seconds in OR-Position
- Direct power connection

### 400 XL - highly functional basic foot hydraulic treatment table

This entry-level model is based on a rugged and easy-to-use technology. Its function is independent of batteries to keep procurement costs low on the one hand and ensures a long service life on the other hand.

- Comfortable three-piece cover surface
- Can be used in any location

**Functionality  
in a nutshell**

## 500 XLS

Item No.: 1500 0005





# 500 ECO

Item No.: 1500 0008



# 400 XL

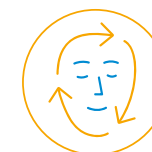
Item No.: 1400 0001



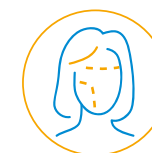
Implantology  
Oral surgery  
Maxillofacial surgery



I.V.I. treatment  
Ophthalmic surgery



Dermatology



Aesthetic surgery  
Plastic surgery  
Hair transplantation

FUNCTIONAL  
CLASS

# 500 XLS

Item No.: 1500 0005

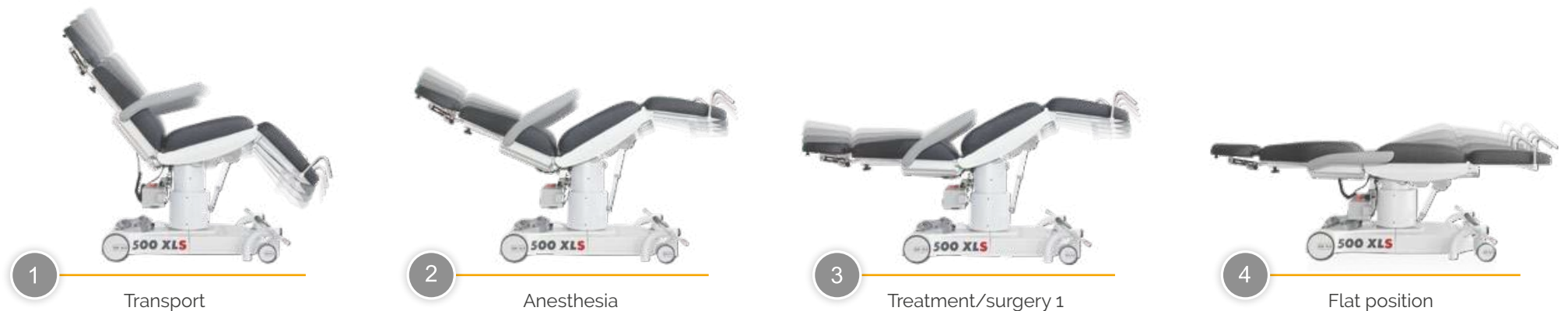
Perfect for oral and maxillo-facial surgery treatments, with multifunctional horseshoe-shaped headrest element. For comfortable patient positioning for applications and treatments requiring prone patient positioning.

**Our specialist**  
for ENT treatment



## Positioning

Standard recommended memo keys



## Precise positioning of the head part

### Headrest

Multifunctional headrest element featuring two-dimensional and longitudinal adjustment. Horseshoe shape also allows treatments in prone position.



## Braking system

**Mechanical. Easy to handle.**

Rugged moving gear featuring 2 central braking steering castors and 2 rigid castors for high stability combined with easy maneuverability.



## Positioning by hand control

### Multi-functional manual keypad

Battery charge indicator



Reset button



CPR button



Auto run function



8 free configurable memory positions



## Positioning by foot control

### Removable foot keypad

for back, seat and height adjustment, including on-off button, 3 memory positions, and a reset key.



# Technical specifications



## Chassis

- Frame profile 60 x 30 mm
- Length chassis incl. lever 1,020 mm
- Width chassis outside 710 mm
- Outside width incl. arm rests 830 mm
- White paint finish
- Central brake, operable from both sides
- 2 pcs. double castors  $\varnothing$  100 mm
- 2 pcs. rigid castors  $\varnothing$  150 mm
- Foot keypad, removable  
(for overall/back part/seat adjustment;  
reset button; auto-run function; 3 memory positions)
- Emergency stop button
- With equipotential bonding connection

## Seat part

## Upper frame

- 4-part support frame (head, back, seat, leg part)
- Length 1,930 – 2,160 mm
- Width of upholstery 610 mm
- Entry height 580 mm
- Removeable upholstery

	Angle	Dimensions (L x W)
• Head part	0°/+180°	275 x 280 mm
• Back part	0°/+84°	610 x 610 mm
• Seat part	-3°/+32°	510 x 600 mm
• Leg part	0°/-70°	490 x 525 mm
• Height adjustment		580 – 860 mm
• Armrests	0°/+180°	455 x 75 mm

## Back part/leg part

## Electrical control

- All components according to IP54
- Hand control with 8 individually programmable memory positions, auto run function, reset button
- Foot keypad

### Electric Drives

- Back, seat, leg part, total up/down
- Shock position

## Lifting column

- Max. lifting 280 mm
- Max. load 200 kg
- Motors IP54 with HAL sensors, to be memorized

## Height adjustment





## Powerful accumulators

- Battery box with 2 batteries (lead-gel), pollution free, maintenance-free, cadmium-free 2 x 12 V, 7,2 Ah
- As back-up-system exchangeable without tools
- Acoustic low voltage signal for discharge protection
- Universal battery charger Input: 100 – 240 V  
Output: 30 V

### Operating time per battery charge

- Measured by operating circle (Prepare-Operate-Recover) 100 OPs
- Quantity of operating circles depends on individual operation

## Mains-free operation

Easy recharging of the equipment thanks to charging adapter and integrated battery charger circuit board.



## Simple battery replacement

Extra security thanks to exchangeable battery box. Easy replacement of discharged battery boxes.



## Further technical details

- Chair has detachable, swiveling armrests made completely with PUR foam
- All touchable metal parts are grounded
- Detachable seat for service friendly access to electric components

Max. load 200 kg

Weight 100 kg

Subject to technical modifications.

## Equipment protection

### Cover drape *stayClean*

2,000 x 730 mm, box á 160 Pieces  
4 x 40 Pieces

Item No.: 3034 0014

Page 64



## Color card

Standard color

anthracite Item No.: 3037 0052

"Tundra skai"  
Page 102

"Pandoria Plus"  
Page 103



# Components



FUNCTIONAL  
CLASS



**500 XLS**  
Item No.: 1500 0005



Backup battery

Item No.: 3047 0000



I.V. Pole stainless steel  
Ø 25/18 mm, one-hand  
height adjustable  
1,070 – 1,660 mm,  
4 hooks, max. 2 kg/hook,  
glass and holder  
(component holder  
3351 0037 not included)

Item No.: 3068 0000



Hand control holder, PVC (component holder 3351 0037 not included)

Item No.: 3351 1023



Hand control holder for attachment onto an I.V. Pole Ø 25/18 mm, PVC

Item No.: 3351 1022



Inlay head pillow

Item No.: 3325 0000



Anesthesia arm board with universal joint, with wrist secure straps

Item No.: 3078 0000



Norm rail 300 mm, seat part

Item No.: 3321 0000



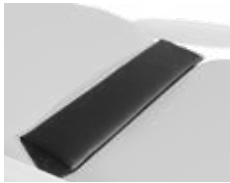
Norm rail, back part

Item No.: 3320 0000



Instrument table 500x300x15 mm, height adjustable, swiveling, detachable, incl. adapter (component holder 3351 0037 not included)

Item No.: 3065 0000



Trapeze cushion, wedge, for back/seat part

Item No.: 3022 0005



Knee half roll, 600x280x140 mm, PUD-coated

Item No.: 3019 0000



Knee roll round, 500x150 mm, PUD-coated

Item No.: 3050 0000



Wrist secure straps, pair

Item No.: 3015 0000



Body strap with Velcro straps, 2-piece

Item No.: 3083 0000



Side rails right and left, swiveling incl. locking, upholstered

Item No.: 3351 1036



Foot protection foil

Item No.: 3326 0000



Component arm stainless steel, swiveling, incl. extendible I.V. Pole Ø 25 mm

Item No.: 3024 0014



Component holder, stainless steel

Item No.: 3351 0037



Pushing handles, pair

Item No.: 3069 0000



Flexible surgical drape support rod with air connection, incl. norm rail and mounting clamp

Item No.: 3351 0009



Flexible surgical drape support rod, incl. norm rail and mounting clamp

Item No.: 3351 0010



Instrument table *supportLine* height adjustable 730-985 mm

Item No.: 3351 0026

*supportLine plus* height adjustable 930-1185 mm  
Item No.: 3351 0045



Cover drape for treatment chair, *stayClean* 2.000x730 mm, box à 160 pieces

Item No.: 3034 0014

# 500 ECO



Item No.: 1500 0008

Perfect for I.V.I. treatments. Direct power connection and the integrated power supply unit enable the more powerful operation with high adjustment speed.

**Out of the box**  
solution

DIRECT POWER CONNECTION



## Positioning

Efficient, comfortable and fast!



Entering



Patient positioning



**5 - 6 SEC**  
IN OR-POSITION



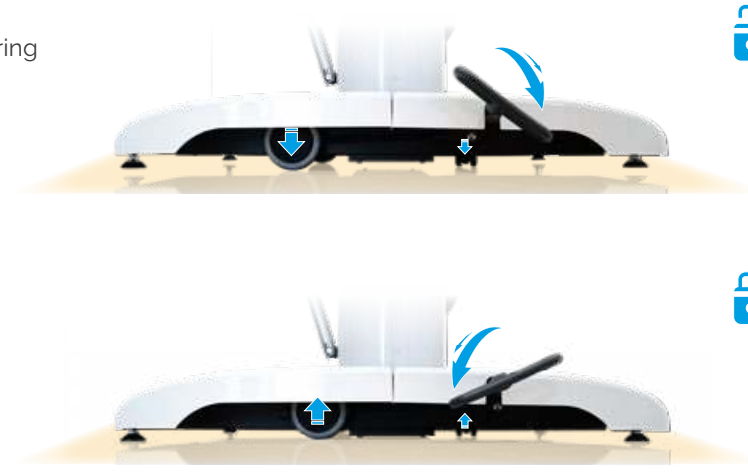
Surgery position



## Sturdy base with mono lifting column

### Stability/maneuvering aid

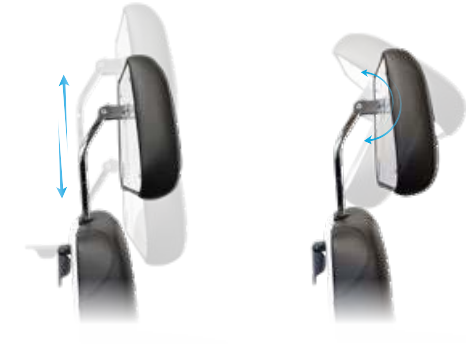
Sturdy stand with three extendable castors combines high stability with simple maneuvering aid (in the event of a change of a location).



## Precise positioning of the head part

### Headrest

Mechanical adjustment options for comfortable and fine-tuned positioning of the patient's head, adapted to his individual body dimensions.



## Positioning by hand control

### Multi-functional manual keypad



Reset button



CPR button



Auto run function



8 free configurable memory positions



## Positioning by foot control

### Optional: foot switch

For 2 memory positions (M1/M2) Item No.: 3351 1029



# Technical specifications



## Chassis

- Outside length 910 mm
- Outside width incl. foot pedal 600 mm
- Outside width incl. arm rests 845 mm
- White paint finish
- 2 pcs. double castors  $\varnothing$  100 mm
- 2 pcs. rigid castors  $\varnothing$  35 mm
- Optional: foot keypad (2 memory positions, M1/M2)

## Upper frame

- 4-part support frame (head, back, seat, leg part)
- Length 1,950 – 2,230 mm
- Width of upholstery 600 mm
- Entry height 550 mm
- Removeable upholstery

	Angle	Dimensions (LxW)
• Head part	-27°/+180°	280 x 420 mm
• Back part	-23°/+85°	710 x 600 mm
• Seat part	-3°/+28°	510 x 600 mm
• Leg part	0°/-75°	490 x 530 mm
• Height adjustment		615 – 890 mm
• Armrests	0°/+180°	455 x 75 mm
• Legroom surgeon		485 – 760 mm
• CPR/flatposition		(height back part) 600 mm

## Electrical control

- All components according to IP54
- Hand control with 8 individually programmable memory positions, auto run function, reset button
- Foot keypad (optional)

### Electric Drives

- Back, seat, leg part, total up/down

## Lifting column

- Max. lifting 275 mm
- Max. load 240 kg
- Motors IPX4 with HAL sensors, to be memorized

## Seat part/CPR

## Back part/leg part

## Height adjustment/legroom





# Components



**500 ECO**  
Item No.: 1500 0008



Multifunctional headrest

Item No.: 3351 1034





Foot keypad to activate the two free configurable memory positions 1 and 2 of hand control

Item No.: 3351 1029



Paper roll holder

Item No.: 3351 1031



*stayClean roll*  
Paper rolls, white embossed, 2-ply, 50 cm x 50 m, carton à 9 pieces

Item No.: 3034 0021



Component mounting support, powder coated with component holder stainless steel

Item No.: 3351 1033



Component holder, stainless steel (component mounting support 3351 1033 not included)

Item No.: 3351 0037



Hand control holder, PVC (component mounting support 3351 1033 not included)

Item No.: 3351 1023



Component arm stainless steel, swiveling, incl. extendible I.V. Pole Ø 25 mm (component mounting support 3351 1033 not included)

Item No.: 3024 0014



I.V. Pole stainless steel Ø 25/18 mm, one-hand height adjustable 1,070 – 1,660 mm, 4 hooks, max. 2 kg/hook, glass and holder (component mounting support 3351 1033 and component holder not included)

Item No.: 3068 0000



Hand control holder for attachment onto an I.V. Pole Ø 25/18 mm, PVC

Item No.: 3351 1022



Side rails right and left, swiveling incl. locking, upholstered

Item No.: 3351 1036



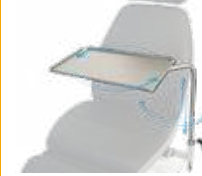
Anesthesia arm board with universal joint, with wrist secure straps

Item No.: 3078 0000



Norm rail 300 mm, seat part

Item No.: 3321 0000



Instrument table 500 x 300 x 15 mm, height adjustable, swiveling, detachable, incl. adapter (component mounting support 3351 1033 not included)

Item No.: 3065 0000



Foot protection foil

Item No.: 3326 0000



Trapeze cushion, wedge, for back/seat part

Item No.: 3022 0005



Knee roll round, 500 x 150 mm, PUD-coated

Item No.: 3050 0000



Knee half roll, 600 x 280 x 140 mm, PUD-coated

Item No.: 3019 0000



Body strap with Velcro straps, 2-piece

Item No.: 3083 0000



Inlay head pillow

Item No.: 3325 0000



Instrument table *supportLine* height adjustable 730 – 985 mm

Item No.: 3351 0026



Instrument table *supportLine plus* height adjustable 930 – 1,185 mm

Item No.: 3351 0045

# 400 XL

Item No.: 1400 0001

Highly functional, basic hydraulic treatment table. The great freedom of movement and ample legroom for optimum access to the patients. The **400 XL** treatment table can be rotated by 360 degrees to also allow even lateral movements. Our entry-level model is based on a rugged and easy-to-use technology. In contrast to our electromechanical models, its function is independent of batteries. This keeps procurement costs low on the one hand and ensures a long service life on the other hand.



**Can be used in any location**

**Easy to service and maintain**

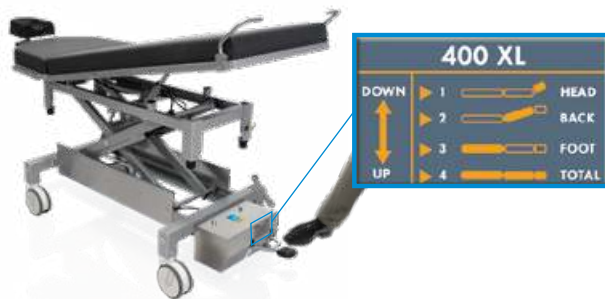
**Outstanding resistance to tipping**

**Ergonomically shaped push handles**

## Designed for optimized function

### Chassis

Gentle and stable hydraulic system for patient positioning. Foot pedal for hydraulic adjustment of head, back, leg part and overall up/down adjustment – guaranteed to last.



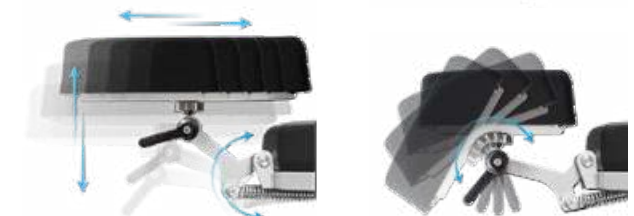
### Double castors

Large double castors for easy moving and maneuvering by one person, even in confined spaces. Effortless directional stability - direction-setting castor, manually adjustable via foot pedal. Central foot brake acting on 4 castors.



### Headrest

3D and longitudinally adjustable headpart with head molding and neck support for guaranteed safe and correct positioning of the head.



## General

- Comfortable three-piece cover surface
- Wide and comfortable upholstery in anthracite
- Low entry height
- Suitable even for very tall patients



## Technical specifications

### Chassis

- Frame profile 50 x 50 mm
- Outside length 1,530 mm
- Outside width 750 mm
- Castor, electrically conductive ø 150 mm

### Lifting column

- Foot hydraulic
- Height adjustment min./max. 650/1,030 mm
- Max. lifting force 2,000 N
- Leg part lifting force 1,500 N
- Back part lifting force 1,200 N
- Head part lifting force 500 N
- Operating pressure 120 bar
- Hydraulic oil, DTE 10 EXCEL 32 approx. 0.7 liter

### Upper frame

- 3-part support frame (head, back, leg part)
- Upholstery 80 mm
- Length 1,930 – 2,060 mm
- Width 700 mm
- Head part angle adjustment  $-28^{\circ}/+21^{\circ}$
- Back part angle adjustment  $-13^{\circ}/+58^{\circ}$
- Leg part angle adjustment  $0^{\circ}/+13^{\circ}$
- Trendelenburg  $-13^{\circ}$
- Height adjustment range 380 mm
- Standard stainless steel side rails, both sides 25 x 10 mm
- Entry height 650 mm
- Legroom surgeon 500 – 880 mm

**Max. load** 175 kg

**Weight** 140 kg

Subject to technical modifications.

## Technical dimensions

### Trendelenburg



### Back part



### Height adjustment



# Components



FUNCTIONAL  
CLASS



**400 XL**  
Item No.: 1400 0001

## Color card

Standard color

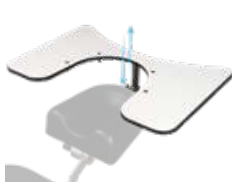
anthracite Item No.: 3037 0052

“Tundra skai”  
Page 102

“Pandoria Plus”  
Page 103







Wrist rest  
550x370 mm,  
height adjustable,  
incl. mounting plate,  
adjustment 115 mm

Item No.: 3209 0000



Head part bumper  
stainless steel

Item No.: 3028 0000



Wrist rest, adjustable,  
incl. mounting plate  
3013 0000,  
adjustment 115 mm

Item No.: 3014 0000



Wrist rest, adjustable, tiltable,  
incl. mounting plate  
3013 0000,  
adjustment 115 mm

Item No.: 3014 0005



Mounting plate stainless steel,  
for wrist rest 3014 0000,  
3014 0005 and 3209 0000

Item No.: 3013 0000



Head fixation pillow with  
hollow (rubins pillow),  
410x250 mm, height 100 mm,  
factory-fitted

Item No.: 3022 0000



Anesthesia arm board  
with universal joint,  
incl. mounting clamp

Item No.: 3011 0000



Side parts right and left,  
580x200 mm,  
incl. quick-release clamp for  
mounting on norm rail

Item No.: 3351 0050



Knee half roll,  
600x280x140 mm,  
PUD-coated

Item No.: 3019 0000



Knee roll round,  
500x150 mm,  
PUD-coated

Item No.: 3050 0000



Wrist secure straps,  
pair

Item No.: 3015 0000



Body strap with Velcro straps,  
2-piece

Item No.: 3083 0000



Mounting clamp  
stainless steel

Item No.: 3026 0000



Flexible surgical drape  
support rod, with air  
connection (mounting clamp  
3090 0000 not included)

Item No.: 3033 0000



Flexible surgical drape  
support rod (mounting clamp  
3090 0000 not included)

Item No.: 3032 0000



Mounting clamp polished  
aluminium, with quick clamp  
lever for norm rail 25x10 mm,  
incl. locking device

Item No.: 3090 0000



Instrument table  
*supportLine*  
height adjustable  
730 – 985 mm

Item No.: 3351 0026



Instrument table  
*supportLine plus*  
height adjustable  
930 – 1,185 mm

Item No.: 3351 0045

# motionLine

Item No.: 1700 0000

The ergonomic transport and relaxing chair for extra patient comfort and wellness flair.

With many practical details for patients and caregivers: Low entry height, synchronously adjustable resting position, comfortable bolster and lumbar support, comfortable push handles and hanging basket for patient property.



## Maximum patient comfort

### Headrest

Flexible, height-adjustable neck support cushion for enhanced patient comfort.



### Double castors

Infinitely adjustable back, leg part and seat adjustment via gas pressure spring with foot release. Castor brakes on the left and right 360-degree rotating castors hold the chair safely in place.



### Insert basket

Practical storage basket for patient medical records and belongings.



## Armrests

Hinged and removable armrests for easy entry and exit as well as transfer of the patient.



## Technical specifications

### Chassis

- Laser frame profile 5 mm
- Chassis length 1,000 mm
- Width incl. wheels 650 mm
- Width incl. armrest 680 mm
- Wheel/castors diameter  $\varnothing$  300/125 mm

### Lifting column

- |             |       |                  |
|-------------|-------|------------------|
|             | Angle | Dimensions (LxW) |
| • Back part | +80°  | 830 x 510 mm     |
| • Seat part | +30°  | 530 x 510 mm     |
| • Leg part  | -82°  | 380 x 510 mm     |
- 
- Upholstery height 50/90 mm
  - Total length 1,750 mm
  - Armrests 0°/+180° height 810 mm
  - Entry height 610 mm
  - Chair height max. 1,360 mm

**Max. load** 135 kg

**Weight** 56 kg

Subject to technical modifications.

**Standard color** anthracite **Item No.:** 3037 0052

**"Tundra skai"**  
Page 102

**"Pandoria Plus"**  
Page 103



## Push handles

Ergonomically shaped, durable, non-sliding rubber grips.



## Technical dimensions

### Back part/leg part



# motionLine-E

Item No.: 1700 0001

Patient transfer and resting position made even easier.

The ergonomically designed transport and relaxing chair for maximum patient comfort. All the benefits of our *motionLine* model in combination with an electrically assisted position control – with a handy, cable-connected remote control.



## Electronically adjustable

### Battery box

Easy recharging of the equipment thanks to charging adapter and integrated battery charger circuit board. Extra security thanks to exchangeable battery box. Easy replacement of discharged battery boxes.



### Hand control

Synchronized back, leg part and seat adjustment – made simple and comfortable by the hand control



### Functions

Synchronized back and leg part angle adjustment



Seat angle adjustment



Auto run function chair position



Auto run function shock position





## Armrests

Hinged and removable armrests for easy entry and exit as well as transfer of the patient.



## Push handles

Ergonomically shaped, durable, non-sliding rubber grips.



## Technical specifications

### Chassis

- Laser frame profile 5 mm
- Chassis length 1,000 mm
- Width incl. wheels 650 mm
- Width incl. armrest 680 mm
- Wheel/castor diameter  $\varnothing$  300/125 mm
- Emergency stop button

### Lifting column

- Electronic control system per hand control
  - Synchronized back-/legrest and seat adjustment
- |                     | Angle    | Dimensions (LxW) |
|---------------------|----------|------------------|
| • Back part         | +80°     | 830 x 510 mm     |
| • Seat part         | +30°     | 530 x 510 mm     |
| • Leg part          | -82°     | 380 x 510 mm     |
| • Upholstery Height |          | 50/90 mm         |
| • Total length      |          | 1,750 mm         |
| • Armrests          | 0°/+180° | height 810 mm    |
| • Entry height      |          | 610 mm           |
| • Chair height max. |          | 1,360 mm         |

## Technical dimensions

### Back part/leg part



### Battery unit

- Battery box with 2 batteries (lead-gel), pollution free, maintenance-free, cadmium-free 2x 12 V, 7.2 Ah
- Universal battery charger: Input: 100 – 240 V  
Output: 30 V

### Max. load

135 kg

### Weight

64 kg  
Subject to technical modifications.

### Standard color

anthracite Item No.: 3037 0052

“Tundra skai”  
Page 102

“Pandoria Plus”  
Page 103



# Components



*motionLine*  
Item No.: 1700 0000



*motionLine-E*  
Item No.: 1700 0001



Backup battery,  
*motionLine-E*

Item No.: 3047 0000



I.V. Pole stainless steel  
Ø 25/18 mm, one-hand  
height adjustable 1,070 –  
1,660 mm, 4 hooks, max.  
2 kg/hook, glass and holder  
(adapter 3082 0000 not  
included)

Item No.: 3068 0000



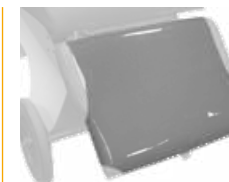
Instrument table  
300x200x13 mm,  
swiveling, detachable,  
incl. adapter

Item No.: 3329 0000



Adapter

Item No.: 3082 0000



Foot protection foil

Item No.: 3319 0000



MOTIONLINE  
MOTIONLINE-E

# supportLine

Item No.: 3351 0026

The *supportLine* mobile instrument table is designed to be an ergonomic aid to supplement treatment and surgeon's chairs.

**The practical  
little helpers**



## Technical specifications

### Chassis

- Footprint 680x400 mm
- 4 castors ø 50 mm

### Lifting column

- Height adjustment 730 – 985 mm

### Stainless steel tray

660x540 mm

### Upper frame

715x540 mm

### Weight

17,5 kg

### Max. load

10 kg

Subject to technical modifications.

## The perfect addition for your OR

### Pneumatic spring technology/foot pedal

The integrated pneumatic spring technology enables the instrument tray to be stopped and positioned smoothly at a suitable working height for the surgeon. Infinitely variable height adjustment via foot pedal.





# supportLine plus



Item No.: 3351 0045

The *supportLine*'s maneuverability, optimised stability and resistance to tipping, its stainless steel design for the user's operating area and its hard-wearing, hygienic surfaces are designed specifically for versatile use in the operating room. The *supportLine plus* mobile instrument table is a 20 cm higher version.



## Technical specifications

### Chassis

- Footprint 680x400 mm
- 4 castors ø 50 mm

### Lifting column

- Height adjustment 930 – 1,185 mm

### Stainless steel tray

660x540 mm

### Upper frame

715x540 mm

### Weight

17,5 kg

### Max. load

10 kg

Subject to technical modifications..

## Tray

The removable, high-quality stainless steel tray is heat-resistant, easy to clean and disinfect and offers plenty of space for holding surgical instruments with an area of 66 x 54 cm.



## Push handle/double castors

Its wide push handle and maneuverable double castors make the *supportLine* easy to position.



# Disposables



The **UFSK-OSYS** hygiene supplies.  
Efficient equipment protection - recommended  
by the manufacturer, because we know  
best what suits our products.

Cover drapes

## stayClean

Item No.: 3034 0014



Application example 500 XLE

Paper roll

# stayClean roll

Item No.: 3034 0021



## Preventive Disposables

The **UFSK-OSYS** hygiene supplies protect and preserve the patient, the user and also the surgical equipment.



Application example 500 **ECO**

# stayClean

Cover drapes

Item No.: 3034 0014

2,000 x 730 mm, box á 160 Pieces, 4 x 40 Pieces

Treatment chairs – ready for the next patient in no time. Perfect fit.

**Equipment protection  
made easy**



Application example 500 XLE

## Equipment protection – cover drapes for treatment chairs

### Perfect protection of the equipment

- Protection against corrosion
- Perfect-fit synthetic equipment protection including barrier function
- Minimized soiling of the upholstery
- With integrated headrest hood
- "Two layer" composite material made from PE film (underside) and PP non-woven flocking



### Hygienic protection for the patient

- Disposable product, hygienically packed
- Pleasant soft feel
- Absorbent and tear-resistant
- Impermeable to liquids and waterproof



## The functional disposable cover drape

### Advantages

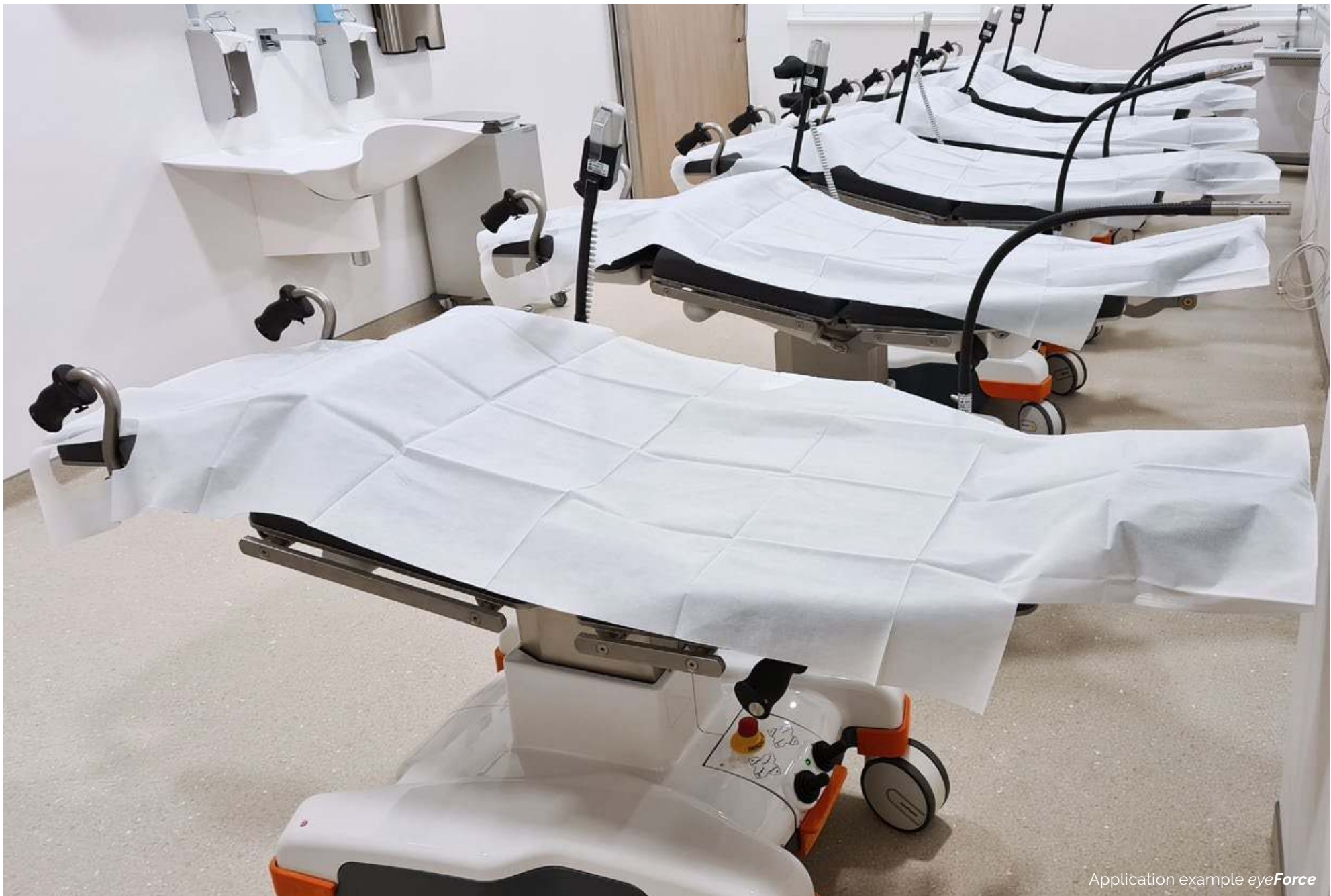
- Easy replacement of used drapes
- No sliding thanks to the hood
- Enormous time savings
- Low purchasing costs



### Application



Application example 500 XLE



Application example eyeForce

# stayClean roll

Paper roll

Item No.: 3034 0021  
Carton á 9 pieces (á 50 cm x 50 m)

The *stayClean roll* tear-off cloths protect your treatment chairs and tables perfectly and quickly ensure hygiene. The perforated cellulose patient pads are particularly user-friendly as they can be easily unrolled and torn off, allowing controlled consumption.

**Efficient  
& secure**



## Example of use

500 *ECO*  
+ Paper roll holder  
+ *stayClean roll*

Item No.: 1500 0008  
Item No.: 3351 1031  
Item No.: 3034 0021

## The practical disposable cloth from the roll

### Perfect protection of the devices and practical hygiene protection for patients

- Thanks to its short perforation, the *stayClean roll* is suitable for all common treatment chairs and tables
- The 2-layer pulp is very absorbent and excellently suitable for everyday use for outpatient treatments
- The very soft and skin-friendly texture provides a pleasant feeling of lying and hygiene



### Scope of delivery

9 rolls (á 50 cm x 50 m)  
made of pure cellulose,  
hygienically single packed

# premiumLine

## Our top models

As the fruit of our decades of experience in the field of ophthalmic and microsurgery, we have managed to design absolute high-end, top quality models. Allow yourself to be swept away by the innovative materials, the visionary shapes, the elegant design and the sophisticated extra functions.

### Set new standards in your operating room!

Discover our *surgiForce* and *surgiForce light* models and allow yourself to be swept away by their economy, effectiveness and quality. These models stand for ultra-precise navigation within the operating field, sterile operation, and a comfortable, non-fatiguing work environment – for a work flow worthy being rated "Premium deluxe". They combine particularly well with our *premiumLine eyeForce* treatment chair.

### Demand the best!



The "Preventive Technology" award reflects uncompromising lightweight construction, outstanding ergonomic operability and space-saving design. Back diseases of your operating theater staff are now a thing of the past. This is our contribution to effective health and safety in the workplace.

**High end quality  
for microsurgery**

## surgiForce

Comfort seat (Illustration) Item No.: 2600 0004  
Formed seat Item No.: 2600 0008





# *surgiForce light*

Comfort seat Item No.: 2600 0006  
Formed seat (Illustration) Item No.: 2600 0009



Ophthalmic surgery



Neurosurgery  
Microsurgery



ENT surgery

# surgiForce



Item No.: 2600 0004 with Comfort seat  
Item No.: 2600 0008 with Formed seat (Illustration)

That is high tech and high precision.

The ultimate surgeon's chair for microsurgery.

Sophisticated engineering, design and function down to the smallest detail. Amazing range of armrest adjusting functions: Turn it, tilt it, rotate it, extend it – to support each of the surgeon's arm movements with the greatest of ease! Ultra-precise navigation within the operating field, sterile operation, and a comfortable, non-fatiguing work environment – for a work flow worthy being rated "Premium de luxe".



## MED.TEC at its highest level

### Double castors

The five high-grade double castors are smooth-running and rotated by 360 degrees. This means no-limits mobility, especially in confined operating room spaces. *surgiForce's* central front castor in particular gives extra stability to keep the treating surgeons safely in place whenever they shift their bodyweight forward.



### Chassis

The drive mechanism's base is made of cast aluminum. This means maximum stability and longevity and no-limits mobility. The material and workmanship meet the strictest sanitary requirements.



### Plastic cover panels

The high-shine plastic cover panels with their scratch-resistant and impact-modified surface finish are extremely hygienic and easy to disinfect. Abrasion-resistant corner guards (orange) made of synthetic rubber take the stress out of maneuvering *surgiForce* even at close quarters to other medical equipment.



## Mains-free operation

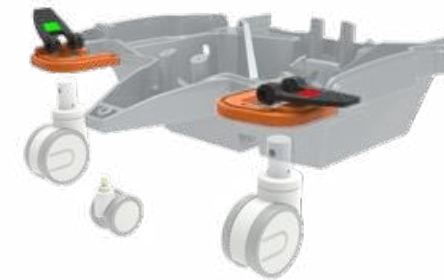
### Accumulators

The charger-battery-control unit integrated in the drive mechanism permits mains-free operation at protective low voltage. Splash-protected charging socket on the bottom of the drive mechanism.



### Braking system

The easy-to-reach and easy-to-use central brake acts on all four double castors to keep the *surgiForce* safely and reliably in the desired position.



## Multi-function unit

### Foot operated

To activate the multi-function unit, tap it with your foot. It allows the effortless powered height adjustments of the seats and armrests, independently of each other.

Intuitive foot keypad operation of the multi-function unit for powered seat height and armrest adjustment. Activation is signaled by acoustic and visual signals.



### Sterile operation

Black pedal:  
seat height adjustment

Gray pedal:  
arm height adjustment



## Armrests with "de luxe" feature

### 3D freedom of movement

High-precision, maintenance-free ball joint for full 360-degree range armrest movements around all axes. Ultra-lightweight guide system for fast, efficient and vibration-proof adjustment of individual underarm positions.

Need to readjust *surgiForce* while maintaining sterile conditions? Not a problem! In addition to the foot keypad, *surgiForce* features so-called "one-hand triggers" underneath the armrests. Lift them briefly to adjust the height!

Angled armrest support for increased freedom of armrest movement around the lateral axis.



## Seating systems



Seat angle adjustment

Back angle adjustment

Back height adjustment



Comfort

The seating system *Comfort*: With mechanical individual adjustment functions. For a correct, back-friendly sitting and working posture, the seat surface or the seat depth can be adjusted by a sliding mechanism located underneath the seat.



Formed seat

The *form* seating system: With enlarged contact surface for more comfort and optimum weight distribution. The seat surface can be individually tilted forward and fixed together with the backrest. In addition, angle and height adjustment of the backrest ensure an ideal sitting posture.

Seat angle adjustment

Back angle adjustment

Back height adjustment





### Linear guides

To give you that extra margin of flexibility: Armrests with linear guides! Applying pressure with your forearm will make the arms "glide" effortlessly in longitudinal direction while letting go will stop them by self-locking mechanism - available as an option.



### Armrests

Made of molded PUR foam - pleasant to the touch, no slick leatherette cover - for guaranteed secure hold. Suitable for disinfectants.



### Upholstery/color card

Standard color  
black  
Item No.: 3037 0235



"Periline" Page 105

### Comfort

Standard color  
anthracite  
Item No.: 3037 0052



"Tundra skai" Page 102  
"Pandoria Plus" Page 103

### Formed seat

## Technical specifications

### Lifting column

- Lifting height of the seat 200 mm
- Lifting height of the armrests 130 mm
- Electromotive adjustment via the foot control elements

### Dimensions maximum (LxWxH) incl. armrests

- with Comfort seat 860x750x1,190 mm
- with Formed seat 860x750x1,280 mm

### Chassis

- Castors  $\varnothing$  100 mm
- 5th castor  $\varnothing$  65 mm
- Central brake acting on all four castors
- Emergency stop button

### Battery unit

- Lead-gel battery, 2 pcs. 12 V, 2.9 A
- Universal battery charger: Input: 100 – 240 V  
Output: 24 V

### Seating systems:

- |                                         | Comfort  | Formed seat |
|-----------------------------------------|----------|-------------|
| • Min. sitting height                   | 595 mm   | 580 mm      |
| • Max. sitting height                   | 795 mm   | 780 mm      |
| • Seat position adjustment forward/back | 120 mm   | 120 mm      |
| • Seat angle adjustment                 | -9°/+3°  | -14°        |
| • Back angle adjustment                 | -21°/+2° | -19°/+5°    |
| • Seat adjustment mechanism             | 113 mm   | 113 mm      |

### Weight

74 kg

### Max. load

150 kg

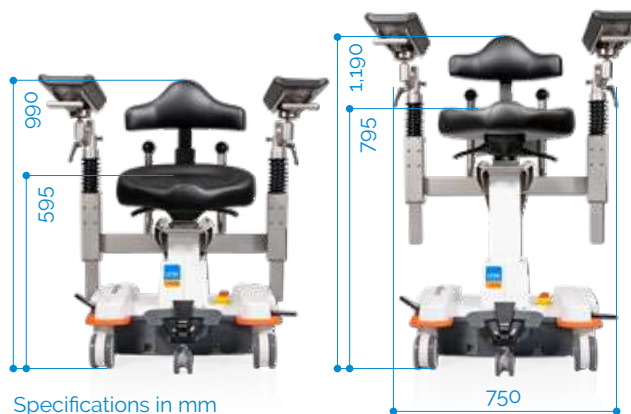
Techn. Änderungen vorbehalten.

## Technical dimensions

### Seating system Comfort

Minimum

Maximum



Specifications in mm

### Seating system Formed seat

Minimum

Maximum



PREMIUM LINE

# surgiForce light

Item No.: 2600 0006 with Comfort seat  
Item No.: 2600 0009 with Formed seat (Illustration)

surgiForce light – extraordinary technology and materials in typical **surgiForce** premium design, in combination with other control elements:

A clearly structured twin foot keypad plus manually operated gas spring mechanisms in the arm supports – for surgeons wishing to precision-adjust their arm position with minimum fuss.



## MED.TEC at its highest level

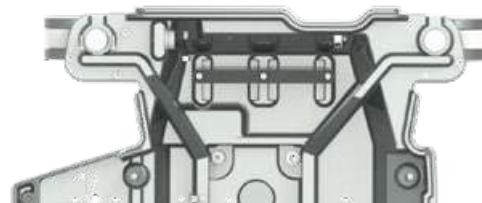
### Double castors

The five high-grade double castors are smooth-running and rotated by 360 degrees. This means no-limits mobility, especially in confined operating room spaces. **surgiForce's** central front castor in particular gives extra stability to keep the treating surgeons safely in place whenever they shift their bodyweight forward.



### Chassis

The drive mechanism's base is made of cast aluminum. This means maximum stability and longevity and no-limits mobility. And the material and workmanship meet the strictest sanitary requirements.



### Plastic cover panels

The mirror-finish plastic cover panels with their scratch-resistant and impact-modified surface finish are extremely hygienic and easy to disinfect.



## Mains-free operation

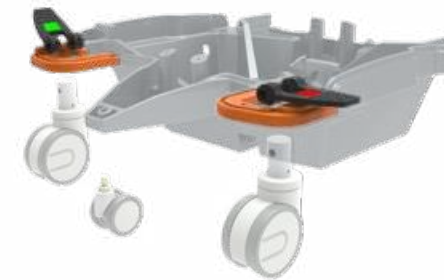
### Accumulators

The charger-battery-control unit integrated in the drive mechanism permits mains-free operation at protective low voltage. Splash-protected charging socket on the bottom of the drive mechanism.



### Braking system

The easy-to-reach and easy-to-use central brake acts on all four double castors to keep the *surgiForce light* safely and reliably in the desired position.



## Multi-function unit

### Foot operated

Timeless foot keypad design for UP/DOWN seat height adjustment with non-slip polyamide touch surfaces. Easy-to-reach brake levers on either side of the driving mechanism for centralized braking/unfettered maneuvering.



Abrasion-resistant corner guards (orange) made of synthetic rubber take the stress out of maneuvering *surgiForce light* even at close quarters to other medical equipment.

## Armrests with gas-spring mechanism



### 3D freedom of movement

Armrest height is adjustable independently of seat height. It takes only simple rolling movement to manually control the gas spring mechanism.

Turning, tilting, rotating: The armrests have been designed for fast and unfussy 3D movements.



Need to readjust *surgiForce light* while maintaining sterile conditions? Not a problem! In addition to the foot keypad, *surgiForce light* features so-called "one-hand triggers" underneath the armrests.



High-precision, maintenance-free ball joint for full 360-degree range armrest movements around all axes. Ultra-lightweight guide system for fast, efficient and vibration-proof adjustment of individual underarm positions.

## Seating systems



Seat angle adjustment

Back angle adjustment

Back height adjustment



Seat angle adjustment

Back angle adjustment

Back height adjustment



Comfort

The Comfort seating system: with mechanical individual adjustment functions. An additional lumbar support as a backrest provides relief for the spine. Sliding carriage for adjusting the seat depth optionally available.



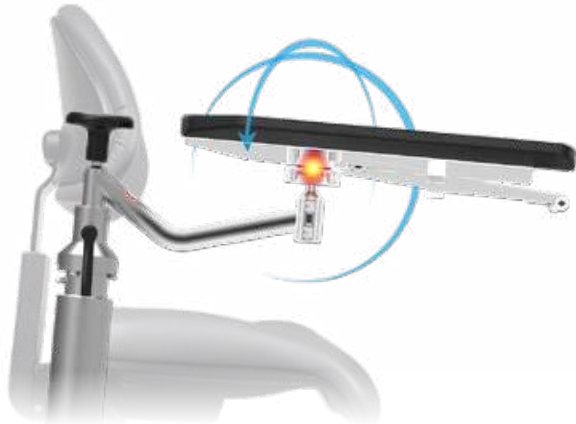
Formed seat

The form seating system: With enlarged contact surface for more comfort and optimum weight distribution. The seat surface can be individually tilted forward and fixed together with the backrest. In addition, angle and height adjustment of the backrest ensure an ideal sitting posture.



## Technical specifications

Angled armrest support for increased freedom of armrest movement around the lateral axis.



### Lifting column

- Lifting height of the seat 200 mm
- Lifting height of the armrests 130 mm
- Electromotive adjustment via the foot control elements

### Dimensions maximum (LxWxH) incl. armrests

- with Comfort seat 825x700x1,190 mm
- with Formed seat 825x700x1,280 mm

### Chassis

- Castors ø 100 mm
- 5th castors ø 65 mm
- Central brake acting on all four castors
- Emergency stop button

### Battery unit

- Lead-gel battery, 2 pcs. 12 V, 2.9 A
- Universal battery charger: Input: 100 – 240 V  
Output: 24 V

### Seating systems:

- Min. sitting height 595 mm | 580 mm
- Max. sitting height 795 mm | 780 mm
- Seat angle adjustments -9°/+3° | -14°
- Back angle adjustments -21°/+2° | -19°/+5°

### Weight

71 kg

### Max. load

150 kg

Techn. Änderungen vorbehalten.

## Technical dimensions

### Upholstery/color card

Standard color  
black  
Item No.: 3037 0223



"Periline" Page 105

### Comfort

Standard color  
anthracite  
Item No.: 3037 0052



"Tundra skai" Page 102  
"Pandoria Plus" Page 103

### Formed seat

### Seating system Comfort

Minimum



Specifications in mm

Maximum



### Seating system Formed seat

Minimum



Maximum



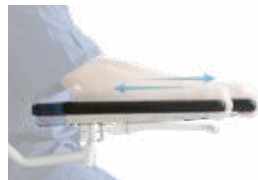
# Components



**surgiForce**  
Formed seat **Item No.:** 2600 0008



**surgiForce**  
Comfort seat **Item No.:** 2600 0004



Armrest pair with linear guide and one-hand release, factory-fitted

Item No.: 3351 1008



Armrest pair with one-hand release for neurosurgery (angular), retrofit kit

Item No.: 3351 1010



Footswitch plate  
429x820 mm, height 53 mm

Item No.: 3317 0000



Footswitch plate  
429x670 mm, height 53 mm

Item No.: 3351 1041

PREMIUM  
LINE

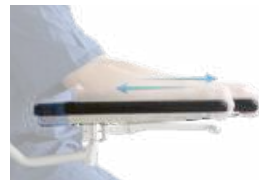
# Components



*surgiForce light*  
Formed seat **Item No.:** 2600 0009



*surgiForce light*  
Comfort seat **Item No.:** 2600 0006



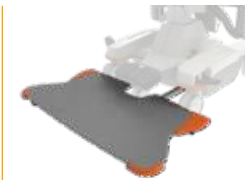
Armrest pair with linear guide and one-hand release, factory-fitted

Item No.: 3351 1008



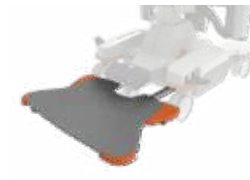
Seat adjustment mechanism for optimum access to the operating field, adjustment 113 mm, factory-fitted

Item No.: 3351 1013



Footswitch plate  
429x820 mm, height 53 mm

Item No.: 3317 0000



Footswitch plate  
429x670 mm, height 53 mm

Item No.: 3351 1041

PREMIUM  
LINE

# performanceLine



## Our classics

They represent proven and time-tested technology in a modern design, they are deliberately low-tech, and they offer an extremely attractive price-performance ratio.

Space-saving design and outstanding maneuverability coupled with a lean range of easy-to-manage functions.

Do you want flexible use in confined spaces with power-supply independent battery operation?

Then you should go for our classic:

The *surgiTrend* and *surgiLine* models – perfect in combination with our *performanceLine*, 500 *XLE* and 500 *XLE* *comfort* treatment chairs.

*performanceLine* systems are designed for user satisfaction

Designed for continuous use in serially equipped operating theaters with high patient turnover, the *performanceLine* satisfies every user thanks to its easy handling before, during and after the surgery.



An award-winning "Preventive Technology", the *performanceLine* works hard to protect your surgical staff from back problems, thanks to its lightweight construction and easy maneuverability.

**Functionality  
in a nutshell**

# surgiTrend

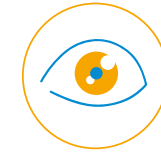
Comfort seat (Illustration) Item No.: 2200 0012  
Dynamic seat Item No.: 2200 0010





# surgiLine

Formed seat (Illustration) Item No.: 2200 0008  
Comfort seat Item No.: 2200 0013



Ophthalmic surgery



Microsurgery



ENT surgery

# surgiTrend



Item No.: 2200 0012 with Comfort seat (Illustration)  
 Item No.: 2200 0010 with Dynamic seat

For back protection and maximum work flexibility in confined spaces. Sophisticated, space-saving drive mechanism with reduced size for ample foot space combines tilt stability with easy and smooth maneuvering. Outstanding sitting comfort and a wide range of adjusting functions allow every surgeon to find his or her personal best and healthiest working position for any work scenario. Available in two seating system types: Comfort or Dynamic.



## Seating systems



**Comfort**

Seat angle adjustment



Back angle adjustment



Back height adjustment



Upholstery/color card

Standard color  
 black  
 Item No.: 3037 0223



"Periline" Page 105

**Comfort**



**Dynamic**

Dynamic-function



Lumbar support angle adjustment



Lumbar support height adjustment



Standard color  
 black  
 Item No.: 3037 0021



"Stamskin Top" Page 104

**Dynamic**

## Armrests

- Stable, ergonomically shaped armrests with curved support surface (350 x 120 mm)
- Height-adjustable and equipped with a ball joint for 360-degree rotation
- Designed for personalized adjustment to the surgeon
- Optionally available with linear guide and one-hand release



## Chassis

- 4 high-quality, smooth-running double castors
- 5th castors for added resistance to tipping
- Optimized foot space
- Central braking system effective on 4 castors
- Integrated foot keypad panel for seat-height adjustment
- Power supply-independent battery box with emergency stop button



## Technical specifications

### Lifting column

- Drive 3,000 N (IPX4)
- Lifting height 200 mm

### Chassis

- L x W (incl. braking system/foot keypad) 650 x 600 mm
- Castors ø 100 mm
- 5th castors ø 65 mm
- Central brake acting on all four castors
- Emergency stop button

### Battery unit

- Battery box with 2 batteries (lead-gel), pollution free, maintenance-free, cadmium-free 2 x 12 V, 7.2 Ah
- Universal battery charger: Input: 100 – 240 V  
Output: 30 V

### Seating systems:

### Comfort | Dynamic

- Min. sitting height 550 mm | 600 mm
- Max. sitting height 750 mm | 800 mm
- Seat angle adjustments +5°/-5° | -12°
- Back angle adjustments +5°/-25° | -16°

### Weight

45 kg

### Max. load

150 kg

Subject to technical modifications.

## Technical dimensions

### Seating system Comfort

Minimum



Specifications in mm

Maximum



### Seating system Dynamic

Minimum



Maximum



# surgiLine

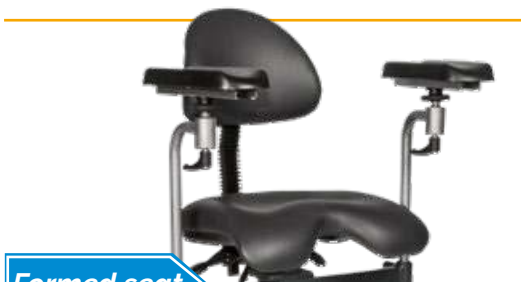


Item No.: 2200 0008 with Formed seat (Illustration)  
 Item No.: 2200 0013 with Comfort seat

The quintessential timeless surgeon chair for microsurgery. The *surgiLine* is a tried and tested classic and a reliable partner in the operating room. It has a rugged steel frame yet is easy to maneuver thanks to its high-grade double castors. The seat and backrest are height-adjustable and promote a healthy sitting posture thanks to *surgiLine's* special lumbar support. The armrests can be individually adjusted for each surgeon. Available in two seating system types: Formed seat or Comfort.



## Seating systems



**Formed seat**

Seat angle adjustment



Back angle adjustment



Back height adjustment



### Upholstery/color card

Standard color  
 anthracite  
 Item No.: 3037 0052



"Tundra skai" Page 102

"Pandoria Plus" Page 103

**Formed seat**



**Comfort**

Seat angle adjustment



Back angle adjustment



Back height adjustment



Standard color  
 black  
 Item No.: 3037 0235



"Periline" Page 105

**Comfort**

PERFORMANCE  
 LINE

## Armrests

- Stable, ergonomically shaped armrests with curved support surface (350 x 120 mm)
- Height-adjustable and equipped with a ball joint for 360-degree rotation
- Designed for personalized adjustment to the surgeon
- Optionally available with linear guide and one-hand release



## Chassis

- Powder-coated tubular steel frame with sanitary, scratch-resistant high-shine plastic cover panels
- Central braking system effective on 4 castors
- Integrated foot keypad panel for seat height adjustment
- Power supply-independent battery box with emergency stop button



## Technical specifications

### Lifting column

- Drive 3,000 N (IPX4)
- Lifting height 200 mm

### Chassis

- L x W (incl. braking system/foot keypad) 640 x 600 mm
- Castors ø 100 mm
- Central brake acting on all four castors
- Emergency stop button

### Battery unit

- Battery box with 2 batteries (lead-gel), pollution free, maintenance-free, cadmium-free 2 x 12 V, 7.2 Ah
- Universal battery charger: Input: 100 – 240 V  
Output: 30 V

### Seating system:

### Formed seat | Comfort

- Min. sitting height 530 mm | 550 mm
- Max. sitting height 730 mm | 750 mm
- Seat angle adjustments +6°/-5° | +5°/-5°
- Back angle adjustments +5°/-18° | +5°/-25°

### Weight

45 kg

### Max. load

150 kg

Subject to technical modifications.

## Technical dimensions

### Seating system Formed seat

#### Minimum



Specifications in mm

#### Maximum



### Seating system Comfort

#### Minimum



#### Maximum





# Components



*surgiTrend*  
Dynamic seat Item No.: 2200 0010



*surgiTrend*  
Comfort seat Item No.: 2200 0012



*surgiLine*  
Formed seat Item No.: 2200 0008



*surgiLine*  
Comfort seat Item No.: 2200 0013



Backup battery

Item No.: 3047 0000



*surgiTrend*  
Footswitch plate  
480x715 mm, height 53 mm

Item No.: 3351 1011



*surgiLine*  
Footswitch plate  
480x715 mm, height 53 mm

Item No.: 3351 0014



Armrest pair with  
linear guide and  
one-hand release,  
factory-fitted

Item No.: 3351 006



Armrest pair with  
one-hand release,  
factory-fitted

Item No.: 3351 1004



# Assistant's chairs

Our operating room assistant for eye and microsurgery. Available with various seat and adjustment systems – to meet your personal needs. For a healthy back and sitting comfort.

**An asset to the team in a wide range of configurations**

*efficiencyClass*

## assistPro F

Item No.: 2400 0005



## assistPro H

Item No.: 2400 0009



*performanceLine*

## assistTrend

Item No.: 2500 0002



*efficiencyClass*

## easyPro F

Item No.: 2400 0010



## easyPro H

Item No.: 2400 0006



## easyPro R

Item No.: 2400 0013



*functionalClass*

## **easyLine F**

Item No.: 2400 0020



## **easyLine R**

Item No.: 2400 0022



## **easyLine Rs**

Item No.: 2400 0024



*functionalClass*

## **assistLine**

Item No.: 2400 0015



# assistTrend

Item No.: 2500 0002

The ergonomic assistant chair.  
The innovation for a healthy back.

## Chassis

- High-grade 5-arm aluminium pedestal
- Excellent handling characteristics thanks to smooth-running double castors
- Optionally available with braking double castors
- Supports loads up to 130 kilograms

## Seating system

### Dynamic seat

- Innovative seating system Dynamic for a healthy lower back
- Height and angle adjustable lumbar support
- Supports a correct, back-friendly sitting posture
- Durable, easy-care seat cover made of medical-grade artificial leather to meet the highest OR requirements



The seating system Dynamic has a lumbar support which is activated automatically by the surgeon's bodyweight. The intensity of ergonomic support can be adjusted underneath the seat.



## Technical specifications

### Lifting column

- Height adjustment 580 – 780 mm
- For body height of 1.75 – 1.95 m

### Chassis

- Five legged chassis  $\varnothing$  585 mm
- Castors  $\varnothing$  65 mm

### Dynamic seat

- D x W x H (incl. back part) 390 x 440 x 410 mm
- Seat/back angle adjustment +12°

### Weight

7.5 kg

### Max. load

130 kg

Subject to technical modifications.

## Flexibility

- Sterile, comfortable height adjustment via foottriggered gas pressure spring
- Flexible height adjustment from 58 to 78 cm
- Reduces neck and back tension caused by prolonged sitting
- Optionally available with arm supports
- Helps maintain sterile conditions

### Standard color

black

Item No.: 3037 0021



Dynamic

"Stamskin Top" Page 104



# assistPro

assistPro F Item No.: 2400 0005  
 assistPro H Item No.: 2400 0009

The perfect assistant's chair for your OR.

## Chassis

- High-grade 5-arm aluminum pedestal
- Excellent handling characteristics thanks to smooth-running double castors
- Optionally available with braking double castors
- Supports loads up to 130 kilograms



## Seating system

### Comfort Seat

- Ergonomically shaped seat and backrest
- Supports a correct, back-friendly sitting posture
- Durable, easy-care seat cover made of medical-grade artificial leather to meet the highest OR requirements
- Optionally available with electrically conductive upholstery



assistPro F  
 foot trigger  
 sterile height adjustment



assistPro H  
 manual trigger  
 classic height adjustment



## Technical specifications

### Lifting column

- Height adjustment *assistPro F* 530–730 mm
- assistPro H* 520–720 mm

### Chassis

- Five legged chassis  $\varnothing$  585 mm
- Castors  $\varnothing$  65 mm

### Comfort seat

- D x W x H (incl. back part) 385 x 425 x 540 mm
- Seat angle adjustment +5°/-5°
- Back angle adjustment +5°/-25°

### Weight

- assistPro F* 12 kg
- assistPro H* 11 kg

### Max. load

130 kg

Subject to technical modifications.

## Flexibility

### Variants

- Sterile, comfortable height adjustment via foottriggered gas pressure spring (*assistPro F*)
- Classic seat height adjustment via manual trigger underneath the seat (*assistPro H*)
- Flexible height adjustment from 53 to 73 cm (*assistPro F*) and 52 to 72 cm (*assistPro H*)
- Reduces neck and back tension caused by prolonged sitting
- Optionally available with arm supports (*assistPro F*)

### Standard color

black  
 Item No.: 3037 0235



Comfort

"Periline" Page 105

# easyPro

easyPro F Item No.: 2400 0010  
 easyPro H Item No.: 2400 0006  
 easyPro R Item No.: 2400 0013

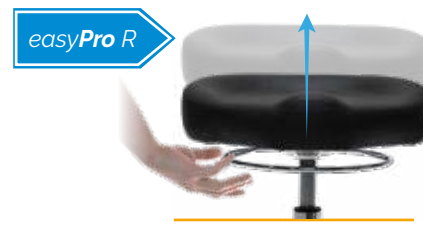
The comfortable assistant chair for your OR.



## Seating system



- Ergonomically shaped, ultra comfortable, large-surface seat element
- Comfort upholstery
- Durable, easy-care seat cover made of medical-grade artificial leather to meet the highest OR requirements



## Chassis

- High-grade 5-arm aluminum pedestal
- Excellent handling characteristics thanks to smooth-running double castors
- Optionally available with braking double castors
- Supports loads up to 130 kilograms

## Technical specifications

### Lifting column

• Height adjustment	easyPro F	510 – 710 mm
	easyPro H	500 – 700 mm
	easyPro R	520 – 700 mm

### Chassis

• Five legged chassis	ø 585 mm
• Castors	ø 65 mm

### Comfort Seat

• D x W x H	385 x 425 x 100 mm
• Seat angle adjustment	+5°/-5°
	easyPro F + easyPro H

### Weight

9 kg

### Max. load

130 kg

Subject to technical modifications.

## Flexibility

### Variants

- Sterile, comfortable height adjustment via foottriggered gas pressure spring (easyPro F)
- Classic seat height adjustment via hand trigger (easyPro H) or hand-operated ring (easyPro R) underneath the seat
- Flexible height adjustment from 51 to 71 cm (easyPro F), 50 to 70 cm (easyPro H) and 52 to 70 cm (easyPro R)

### Standard color

black

Item No.: 3037 0235



### Comfort

„Periline“ Page 105

# easyLine

easyLine F Item No.: 2400 0020  
 easyLine R Item No.: 2400 0022  
 easyLine Rs Item No.: 2400 0024

The all-rounder for your OR.



**Lowest seat height  
in its class**

## Chassis

- High-grade 5-arm aluminum pedestal
- Excellent handling characteristics thanks to smooth-running double castors
- Optionally available with braking double castors
- Low seat position thanks to short gas spring (easyLine Rs)
- Supports loads up to 130 kilograms

## Technical specifications

### Lifting column

- Height adjustment
 

easyLine F	580 – 760 mm
easyLine R	575 – 760 mm
easyLine Rs	465 – 580 mm

### Chassis

- Five legged chassis ø 585 mm
- Castors ø 65 mm

### Round seat

- D x W x H 400 x 400 x 105 mm

### Weight

- |             |        |
|-------------|--------|
| easyLine F  | 9.8 kg |
| easyLine R  | 7.6 kg |
| easyLine Rs | 7.6 kg |

### Max. load

130 kg

Subject to technical modifications.

## Seating system



easyLine F



easyLine R



easyLine Rs

- Ultra comfortable, large-surface seat part, thick seat cushion with high adaptability
- Comfort upholstery
- Durable, easy-care seat cover made of medical-grade artificial leather to meet the highest OR requirements

## Flexibility

### Variants

- Sterile, comfortable height adjustment via foottriggered gas pressure spring (easyLine F)
- Classic seat height adjustment via hand-operated ring (easyLine R, easyLine Rs) underneath the seat
- Flexible height adjustment from 58 to 76 cm (easyLine F), 57.5 to 76 cm (easyLine R) and 46.5 to 58 cm (easyLine Rs)

### Standard color

black

Item No.: 3037 0235



**Round seat**

"Periline" Page 105

# assistLine



Item No.: 2400 0015

The one with the cushy saddle seat.

## Chassis

- High-grade 5-arm aluminum pedestal
- Excellent handling characteristics thanks to smooth-running double castors
- Optionally available with braking double castors
- Supports loads up to 130 kilograms



## Seating system

### Saddle seat

- Ergonomic saddle seat
- Allows the assistants to sit in comfort
- Prevents tension pain and fatigue
- Supports blood circulation
- Durable, easy-care seat cover made of medical-grade artificial leather to meet the highest OR requirements



## Technical specifications

### Lifting column

- Height adjustment 520 – 720 mm

### Chassis

- Five legged chassis  $\varnothing$  585 mm
- Castors  $\varnothing$  65 mm

### Saddle seat

- D x W x H 350 x 425 x 180 mm
- Seat angle adjustment  $+5^{\circ}/-5^{\circ}$

### Weight

7.5 kg

### Max. load

130 kg

Subject to technical modifications.

## Flexibility

- Classic seat height adjustment via hand trigger underneath the seat
- Flexible height adjustment from 52 to 72 cm
- Small size for flexible use in OR's and labs

### Standard color

anthracite

Item No.: 3037 0052



Saddle seat

"Tundra skai" Page 102

"Pandoria Plus" Page 103

# Components



*assistTrend*  
Item No.: 2500 0002



*assistPro F*  
Item No.: 2400 0005



*assistPro H*  
Item No.: 2400 0009



Armrest pair  
incl. traverse  
*assistTrend*

Item No.: 3300 0000



Armrest pair  
incl. traverse  
*assistPro F*

Item No.: 3351 0038



*easyPro F*  
Item No.: 2400 0010



*easyPro H*  
Item No.: 2400 0006



*easyPro R*  
Item No.: 2400 0013



Double rimmed castor,  
65 mm, with braking function

Item No.: 3351 0040



# Components



*easyLine F*  
Item No.: 2400 0020



*easyLine R*  
Item No.: 2400 0022



*easyLine Rs*  
Item No.: 2400 0024



*assistLine*  
Item No.: 2400 0015



Double rimmed castor,  
65 mm, with braking function

Item No.: 3351 0040



## Regulatory information on the equipment's registration as a medical device



UFSK Item No.	Medical device Category		Active medical device	Medical device CE conformity	Performance characteristics in accordance with basic standards	Electrical safety
<i>eyeForce</i> 1800 0000	<b>Treatment chair</b>	electrically adjustable/safety extra-low voltage	DC battery operated	<b>in the EU:</b> <b>Class I</b> Conformity assessment procedure in accordance with Annexes II and III, Regulation (EU) 2017/745, Art. 52 (7) (formerly: Annex VII, Directive 93/42/EWG)	DIN EN 60601-1, DIN EN 60601-1-2	DIN EN 60601-1 Protection class II, Type B
<i>500 XLE</i> 1500 0006						
<i>500 XLE comfort</i> 1500 0006 + 3037 0080						
<i>500 XLS</i> 1500 0005						
<i>500 ECO</i> 1500 0008						
<i>motionLine-E</i> 1700 0001	<b>Transport- and relaxing chair</b>		main connection, via integrated power supply (100 – 240 V) incl. isolating transformer	<b>in the US/FDA:</b> <b>Class I</b> Conformity assessment in accordance with 21 CFR Part 886, 510(k) Exempt	DIN EN 60529 Degree of Protection IP24	DIN EN 62353 Technical Safety Inspection once per year
<i>surgiForce</i> 2600 0004 2600 0008	<b>Surgeon's chair</b>	DC battery operated				
<i>surgiForce light</i> 2600 0006 2600 0009						
<i>surgiTrend</i> 2200 0010 2200 0012						
<i>surgiLine</i> 2200 0008 2200 0013						

<b>UFSK Item No.</b>	<b>Medical device Category</b>	<b>Active medical device</b>	<b>Medical device CE conformity</b>	<b>Quality/performance characteristics and equipment safety</b>
<i>motionLine</i> 1700 0000	<b>Transport- and relaxing chair</b>	pneumatically adjustable		
<i>400 XL</i> 1400 0001	<b>Treatment table</b>	hydraulically adjustable		
<i>assistTrend</i> 2500 0002	<b>Assistant's chair</b>	pneumatically adjustable	<p><b>in the EU:</b> <b>Class I</b></p> <p>Conformity assessment procedure in accordance with Annexes II and III, Regulation (EU) 2017/745, Art. 52 (7) (formerly: Annex VII, Directive 93/42/EWG)</p> <p><b>in the US/FDA:</b> <b>Class I</b></p> <p>Conformity assessment in accordance with 21 CFR Part 886, 510(k) Exempt</p>	<p>in accordance with Regulation (EU) 2017/745, Art. 52 (7)</p> <p>Technical Safety Inspection once per year</p>
<i>assistPro F</i> 2400 0005				
<i>assistPro H</i> 2400 0009				
<i>easyPro F</i> 2400 0010				
<i>easyPro H</i> 2400 0006				
<i>easyPro R</i> 2400 0013				
<i>easyLine F</i> 2400 0020				
<i>easyLine R</i> 2400 0022				
<i>easyLine Rs</i> 2400 0024				
<i>assistLine</i> 2400 0015				
<i>supportLine</i> 3351 0026	<b>Instrument table</b>		<p><b>in the EU:</b> <b>Class I</b></p> <p>Conformity assessment procedure in accordance with Annexes II and III, Regulation (EU) 2017/745, Art. 52 (7) (formerly: Annex VII, Directive 93/42/EWG)</p>	
<i>supportLine plus</i> 3351 0045				

# Color cards



Customize the upholstery of your products to color-coordinate them with your workplace environment.

To do this, select one or two colors (main and accent color - as with the 500 **XLE** *comfort* and 500 **ECO**) from one of the following color cards.




Application example *motionLine-E*

The colors displayed on your device may differ slightly from the original colors. If you wish to receive original color charts, please contact us at [info@ufsk-osys.com](mailto:info@ufsk-osys.com).



### Example: standard version

-  **Main color:**  
anthrazit F6461197  
Item No.: 3037 0052
-  **Accent color:**  
chrom F6461205  
Item No.: 3037 0056





500 XLE comfort

Item No.: 1500 0006  
+ 3037 0080


### Examples of color combinations

-  schoko F6461357  
Item No.: 3037 0060
-  feuer F6461454  
Item No.: 3037 0063



-  safran F6461542  
Item No.: 3037 0069
-  schoko F6461357  
Item No.: 3037 0060



-  atoll F6461453  
Item No.: 3037 0062
-  weiß F6461198  
Item No.: 3037 0134



# “Tundra skai”



High quality skai® material with fine calf leather grain and subdued matte-gloss-effect. The very extensive and trend-orientated color spectrum enables many applications and combinations.

### Product Specification

- Long-lasting
- Tear resistant
- Easy to clean
- Abrasion resistant (DIN EN ISO 6570-2)
- Lightfast
- Disinfectant resistant
- Biocompatibility: cytotoxicity (EN ISO 10 993-5) and epicutaneous test (EN ISO 10 993-10)
- Blood- and urine resistant
- Phthalate-free
- Vegan

<i>eyeForce</i>	1800 0000
<i>500 XLE</i>	1500 0006
<i>500 XLE comfort</i>	1500 0006
	+ 3037 0080
<i>500 XLS</i>	1500 0005
<i>500 ECO</i>	1500 0008
<i>400 XL</i>	1400 0001
<i>surgiForce</i>	Formed seat 2600 0008
<i>surgiForce light</i>	Formed seat 2600 0009
<i>surgiLine</i>	Formed seat 2200 0008
<i>assistLine</i>	2400 0015
<i>motionLine</i>	1700 0000
<i>motionLine-E</i>	1700 0001

+ Item No.: 3037 0...

weiß F6461198 Item No.: .....134	creme F6461210 Item No.: .....057	beige F6461636 Item No.: .....094	sand F6461230 Item No.: .....058	pistazio F6461610 Item No.: .....153	mint F6461495 Item No.: .....067	aqua F6461456 Item No.: .....001	türkis F6461338 Item No.: .....008
perle F6461288 Item No.: .....007	silber F6461550 Item No.: .....070	stone F6461608 Item No.: .....075	bleu F6461496 Item No.: .....068	dolphin F6461609 Item No.: .....076	sky F6461581 Item No.: .....073	royal F6461196 Item No.: .....051	atoll F6461453 Item No.: .....062
violett F6461356 Item No.: .....059	cyclame F6461381 Item No.: .....119	orchidee F6461354 Item No.: .....011	bordeaux F6461350 Item No.: .....010	kirsche F6461199 Item No.: .....054	feuer F6461454 Item No.: .....063	karneol F6461557 Item No.: .....072	orange F6461556 Item No.: .....071
apricot F6461458 Item No.: .....066	mais F6461457 Item No.: .....065	mango F6461607 Item No.: .....074	safran F6461542 Item No.: .....069	limonade F6461343 Item No.: .....009	limone F6461543 Item No.: .....109	smaragd F6461455 Item No.: .....064	agave F6461273 Item No.: .....006
chrom F6461205 Item No.: .....056	ocean F6461204 Item No.: .....055	schoko F6461357 Item No.: .....060	schwarz F6461195 Item No.: .....050	anthrazit F6461197 Item No.: .....052			

The colors displayed on your device may differ slightly from the original colors. If you wish to receive original color charts, please contact us at [info@ufsk-osys.com](mailto:info@ufsk-osys.com).

# "Pandoria Plus"



skai® Pandoria Plus is a high-quality upholstery material, whose fine micropore structure gives a certain unobtrusiveness, which is refined by an attractive tone-in-tone effect. The very pleasant feel of the material and the excellent material characteristic and the broad, modern color spectrum make skai® Pandoria Plus universally usable.


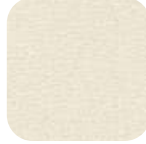
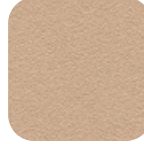
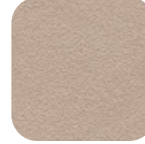
















## Product Specification

- Long-lasting
- Tear resistant
- Easy to clean
- Abrasion resistant (DIN EN ISO 5470-2)
- Resistant to oil and fat
- Lightfast
- Disinfectant resistant
- Flame protection
- Biocompatibility: cytotoxicity (EN ISO 10 993-5) and epicutaneous test (EN ISO 10 993-10)
- Resistant to sudor, blood and urine
- Antibacterial according to JIS Z 2801
- Vegan

<i>eyeForce</i>		1800 0000
<i>500 XLE</i>		1500 0006
<i>500 XLE comfort</i>		1500 0006
		+ 3037 0080
<i>500 XLS</i>		1500 0005
<i>500 ECO</i>		1500 0008
<i>400 XL</i>		1400 0001
<i>surgiForce</i>	Formed seat	2600 0008
<i>surgiForce light</i>	Formed seat	2600 0009
<i>surgiLine</i>	Formed seat	2200 0008
<i>assistLine</i>		2400 0015
<i>motionLine</i>		1700 0000
<i>motionLine-E</i>		1700 0001

+ Item No.: 3037 0136

+ Item No.: 3037 0...

				
weiß F6413046 Item No.: .....053	hellbeige F6413047 Item No.: .....141	kiesel F6413048 Item No.: .....158	birke F6413049 Item No.: .....159	smoke F6413050 Item No.: .....221
				
silbergrau F6413075 Item No.: .....275	platin F6413053 Item No.: .....161	anthrazit F6413076 Item No.: .....276	schwarz F6413052 Item No.: .....170	schoko F6413051 Item No.: .....160
				
gletscher F6413055 Item No.: .....162	sky F6413074 Item No.: .....277	royal F6413056 Item No.: .....163	smaragd F6413073 Item No.: .....278	kaktus F6413077 Item No.: .....281
				
feuer F6413058 Item No.: .....166	kirsche F6413079 Item No.: .....279	fuchsia F6413078 Item No.: .....280	mais F6413057 Item No.: .....164	limone F6413054 Item No.: .....165

The colors displayed on your device may differ slightly from the original colors. If you wish to receive original color charts, please contact us at [info@ufsk-osys.com](mailto:info@ufsk-osys.com).

# “Stamskin Top”



User friendly: High flexibility of the material ensures a perfect finish.

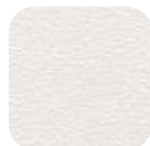
Safe for the user: Phthalate-free, easy to clean and fulfills fire safety standards.

### Product Specification

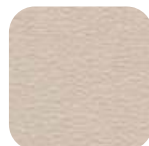
- Extremely durable
- Phthalate free
- Easy to clean
- Flame protection
- Mildew resistant

*surgiTrend* Dynamic seat 2200 0010  
*assistTrend* 2500 0002

+ Item No.: 3037 0...



F4340-10120  
Item No.: .....023



F4340-07422  
Item No.: .....016



F4340-20130  
Item No.: .....084



F4340-20156  
Item No.: .....207



F4340-50622  
Item No.: .....215



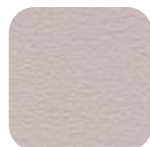
F4340-50623  
Item No.: .....216



F4340-20129  
Item No.: .....146



F4340-00002  
Item No.: .....021



F4340-20162  
Item No.: .....205



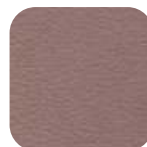
F4340-20161  
Item No.: .....206



F4340-20150  
Item No.: .....204



F4340-5015  
Item No.: .....198



F4340-07496  
Item No.: .....046



F4340-07432  
Item No.: .....002



F4340-20154  
Item No.: .....208



F4340-07445  
Item No.: .....030



F4340-50621  
Item No.: .....199



F4340-07480  
Item No.: .....039



F4340-07436  
Item No.: .....020



F4340-10295  
Item No.: .....044



F4340-07459  
Item No.: .....028



F4340-20157  
Item No.: .....211



F4340-5347  
Item No.: .....209



F4340-50454  
Item No.: .....210



F4340-20149  
Item No.: .....212



F4340-50619  
Item No.: .....214



F4340-20127  
Item No.: .....079



F4340-07477  
Item No.: .....036



F4340-07476  
Item No.: .....035



F4340-50618  
Item No.: .....220



F4340-07485  
Item No.: .....034



F4340-50620  
Item No.: .....213



F4340-07478  
Item No.: .....037



F4340-07479  
Item No.: .....038

The colors displayed on your device may differ slightly from the original colors. If you wish to receive original color charts, please contact us at [info@ufsk-osys.com](mailto:info@ufsk-osys.com).

# “Periline”



## Product Specification

- Without Phthalates
- Biocompatibility: cytotoxicity (EN ISO 10 993-5) and epicutaneous test (EN ISO 10 993-10)
- Urine resistance
- Blood resistance
- Resistance to perspiration
- Resistance to spitting
- Light fastness
- Color fastness to rubbing
- Flame retardant

<i>surgiForce</i>	Comfort seat	2600 0004
<i>surgiForce light</i>	Comfort seat	2600 0006
<i>surgiTrend</i>	Comfort seat	2200 0012
<i>surgiLine</i>	Comfort seat	2200 0013
<i>assistPro F</i>		2400 0005
<i>assistPro H</i>		2400 0009
<i>easyPro F</i>		2400 0010
<i>easyPro H</i>		2400 0006
<i>easyPro R</i>		2400 0013
<i>easyLine F</i>		2400 0020
<i>easyLine R</i>		2400 0022
<i>easyLine Rs</i>		2400 0024

+ Item No.: 3037 0...

				
kastanie 015817 Item No.: .....240	light brown 016037 Item No.: .....239	creme 015812 Item No.: .....225	weiß 010881 Item No.: .....224	stein 015813 Item No.: .....236
				
saphir 015814 Item No.: .....231	delft 010766 Item No.: .....241	antistatisch schwarz Item No.: .....223	schwarz 011499 Item No.: .....235	anthracit 016046 Item No.: .....234
				
azur 015815 Item No.: .....230	aubergine 016041 Item No.: .....229	lavendel 016042 Item No.: .....228	rot 010878 Item No.: .....238	orange 016040 Item No.: .....237
				
kiwi 015816 Item No.: .....233	lime green 016043 Item No.: .....232	lemon 016039 Item No.: .....226	safran 010879 Item No.: .....227	

The colors displayed on your device may differ slightly from the original colors. If you wish to receive original color charts, please contact us at [info@ufsk-osys.com](mailto:info@ufsk-osys.com).



# UFSK-International OSYS GmbH



DR. KANAL (WIESBADEN, DE)

To learn more about us and see the latest references of national and international eye clinics, please go to [www.ufsk-osys.com](http://www.ufsk-osys.com)

## Legal Notice

UFSK-International OSYS GmbH,  
D - 93055 Regensburg

All rights, especially the right of reproduction and distribution as well as translation, are reserved. No part of this publication may be reproduced in any form whatsoever without the written permission of the publisher, or processed, duplicated or distributed by means of electronic systems. We accept no liability for minor technical changes, color variations, or typesetting and translation errors. Due to our quality policy with continuous improvements, the products may differ from the images shown. Any errors and legal disputes based on this document may be claimed only in reference to its German original or an authorized foreign-language version.

Conceptual Design and Completion/  
Layout and Design:  
UFSK-International OSYS GmbH,  
Kirchhoffstrasse 1, D - 93055 Regensburg

English translation of the original German version, produced and printed in Germany.



***The future is mobile.***



# Upgrade your OR to perfection.



*eyeForce*



*500 XLE*



*500 XLE comfort*



*500 XLS*



*500 ECO*



*400 XL*



*motionLine*



*motionLine-E*



*surgiForce*



*surgiForce light*



*surgiTrend*



*surgiLine*



*stayClean wipes*



*stayClean*



*staySoft*



*stayClean roll*



*supportLine*



*supportLine plus*



*assistTrend*



*assistPro F*



*assistPro H*



*easyPro F*



*easyPro H*



*easyPro R*



*easyLine F*



*easyLine R*



*easyLine Rs*



*assistLine*

## CONTACT US



**UFSK**  
INTERNATIONAL

**OSYS**

UFSK-International OSYS GmbH  
Kirchhoffstraße 1  
93055 Regensburg  
Germany

Phone +49 (0) 941 78862 15  
Fax +49 (0) 941 78862 35  
Mail [info@ufsk-osys.com](mailto:info@ufsk-osys.com)  
Web [ufsk-osys.com](http://ufsk-osys.com)

**MADE IN GERMANY**  
Design | Construction | Manufacturing